

## Bond

Polyester 100%, Weight 250 g/m2 +/-5%, Abrasion Resistance 100 000 Martindale cycles (EN ISO 12947-2), Pilling 5 (EN ISO 12945-2), Light Fastness 6 (EN ISO 105-B02), Flammability (BS EN 1021-1) (BS EN 1021-2), CRIB 5, BS 7176 Medium Hazard, 11M(UNI 9175) **DOWNLOAD**



The colours presented do not constitute an offer within the meaning of law. Materials are displayed for reference only and may vary by browser, monitor, or printer from the actual material colour. Before specifying, refer to a physical sample.

## Fenno

100% Polyester , weight 402g/m2, Abrasion Resistance 100 000 Martindale cycles (EN ISO 12947-2), Pilling 4 (EN ISO 12945-2), Light fastness 5 (EN ISO 105-B02:2014), Fastness to Rubbing wet 4-5, dry 4-5 (EN ISO 105-X12) Flamability (BS 5852 Ignition Source 0, water repellent , Oekotex **DOWNLOAD**



The colours presented do not constitute an offer within the meaning of law. Materials are displayed for reference only and may vary by browser, monitor, or printer from the actual material colour. Before specifying, refer to a physical sample.

## Keimo

surface 100% PU, basic material: 65% polyester, 35% cotton, weight 435 g/m<sup>2</sup> +/-5%, abrasion >100 000 Martindale cycles (EN ISO 5470-2 method 1), light fastness >5 (EN ISO 105 B 02), resistance to pilling 4-5 (EN ISO 105-X12), non-flammability certificate (BS 5852/DIN EN 1021-1) **DOWNLOAD**



The colours presented do not constitute an offer within the meaning of law. Materials are displayed for reference only and may vary by browser, monitor, or printer from the actual material colour. Before specifying, refer to a physical sample.

## Nice

Polyester 100%, weight 366 g/m<sup>2</sup> +/-15g, abrasion 140 000 Martindale cycles (PN-EN ISO 12947-2:2000), resistance to pilling 4-5 (PN-EN ISO 12945-2:2002), light fastness 3-4 (PN-EN ISO 105 - B02:2013), non flammability certificate (BN EN 1021-1:2007) (BS EN 1021-2:2007) **DOWNLOAD**

**The fabric will be withdrawn from the offer from March 2024.**



The colours presented do not constitute an offer within the meaning of law. Materials are displayed for reference only and may vary by browser, monitor, or printer from the actual material colour. Before specifying, refer to a physical sample.

## Sawana

Composition 100% polyester, weight 245g/m<sup>2</sup> ± 5%, roll width 140 cm, abrasion resistance 70,000 Martindale cycles (BS EN ISO 12947-2:1999), pilling 4-5 (DIN EN ISO 12945/2:2000), light fastness 4 (EN ISO 105-B02:2013), fastness to rubbing wet: 4 (UNI EN ISO 105-X12:2016) dry: 4-5 (UNI EN ISO 105-X12:2016), flammability - DIN EN 1021-1 **DOWNLOAD** Colors marked \*available while supplies last



SN 34



SN 72



SN 80



SN 61



SN 17



SN 84



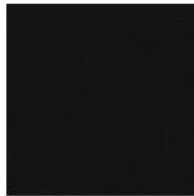
SN 11



SN 21



SN 05



SN 14

The colours presented do not constitute an offer within the meaning of law. Materials are displayed for reference only and may vary by browser, monitor, or printer from the actual material colour. Before specifying, refer to a physical sample.

## Alpa

Composition: 95% Polyester, 5% Acrylic, Weight 550 g/m<sup>2</sup> ± 5%, Roll width 140 cm, Abrasion resistance >50 000 cykli Martindale'a (EN ISO 12947-2), Pilling 4 (UNI EN ISO 12945-2), Light fastness 4 (EN ISO 105-B02), Fastness to rubbing Wet: 4-5 (ISO 105-X12), Dry: 4-5 (ISO 105-X12)



AP004

AP005

AP006

AP002

AP001

The colours presented do not constitute an offer within the meaning of law. Materials are displayed for reference only and may vary by browser, monitor, or printer from the actual material colour. Before specifying, refer to a physical sample.

## Charles

Composition: 100% Polyester Weight: 290 g/m<sup>2</sup> Roll width: 140cm Abrasion Resistance 90,000 Martindale cycles (BS EN ISO 12947-2:1998) Pilling: 4 (EN ISO 12 945-2) Light Fastness 5 (ISO 105-B02) Fastness to Rubbing Wet: 4-5 (UNI EN ISO 105-X12) Dry: 4-5 (UNI EN ISO 105-X12) Flammability: -DIN EN 1021-1 **DOWNLOAD**

\*Charles fabric, due to its structure (long hair), can be arranged in a velour way while being used, creating the impression of different shades of upholstery. It is also susceptible to bending while sitting, which is why it should be combed very gently.



CH 024

CH 022

CH 030

CH 041

CH 044

CH 045

CH 038

CH 040

CH 034

CH 032

CH 033

CH 009

CH 004

CH 006

CH 005

CH 002

CH 001

The colours presented do not constitute an offer within the meaning of law. Materials are displayed for reference only and may vary by browser, monitor, or printer from the actual material colour. Before specifying, refer to a physical sample.

## Charles - Studio Design

Composition: 100% Polyester Weight: 290 g/m2 Roll width: 140cm Abrasion Resistance 90,000 Martindale cycles (BS EN ISO 12947-2:1998) Filling: 4 (EN ISO 12 945-2) Light Fastness 5 (ISO 105-B02) Fastness to Rubbing Wet: 4-5 (UNI EN ISO 105-X12) Dry: 4-5 (UNI EN ISO 105-X12) Flammability: -DIN EN 1021-1 [DOWNLOAD](#)

\*Charles fabric, due to its structure (long hair), can be arranged in a velour way while being used, creating the impression of different shades of upholstery. It is also susceptible to bending while sitting, which is why it should be combed very gently.

\*Studio Design - Extended delivery time



CH 025



CH 031



CH 029



CH 028



CH 027



CH 036



CH 035



CH 037



CH 039



CH 043



CH 042



CH 010



CH 011



CH 015



CH 016



CH 017



CH 018



CH 023



CH 019



CH 021



CH 020



CH 026



CH 003



CH 012



CH 014

The colours presented do not constitute an offer within the meaning of law. Materials are displayed for reference only and may vary by browser, monitor, or printer from the actual material colour. Before specifying, refer to a physical sample.



## Cura

Composition 98% recycled polyester, 2% polyester, Weight 300 g/m<sup>2</sup> ± 5%, Roll width 140 cm, Abrasion resistance 100 000 Martindale cycles (EN ISO 12947-2), Pilling 4-5 (EN ISO 12945-2), Light fastness 5-8 (EN ISO 105-B02), Fastness to rubbing Wet: 4-5 (EN ISO 105-X12) Dry: 4-5 (EN ISO 105-X12), Flammability • BS EN 1021-1 • BS EN 1021-2



CR158



CR157



CR160



CR133



CR012



CR168



CR169



CR009



CR882



CR886



CR667



CR670



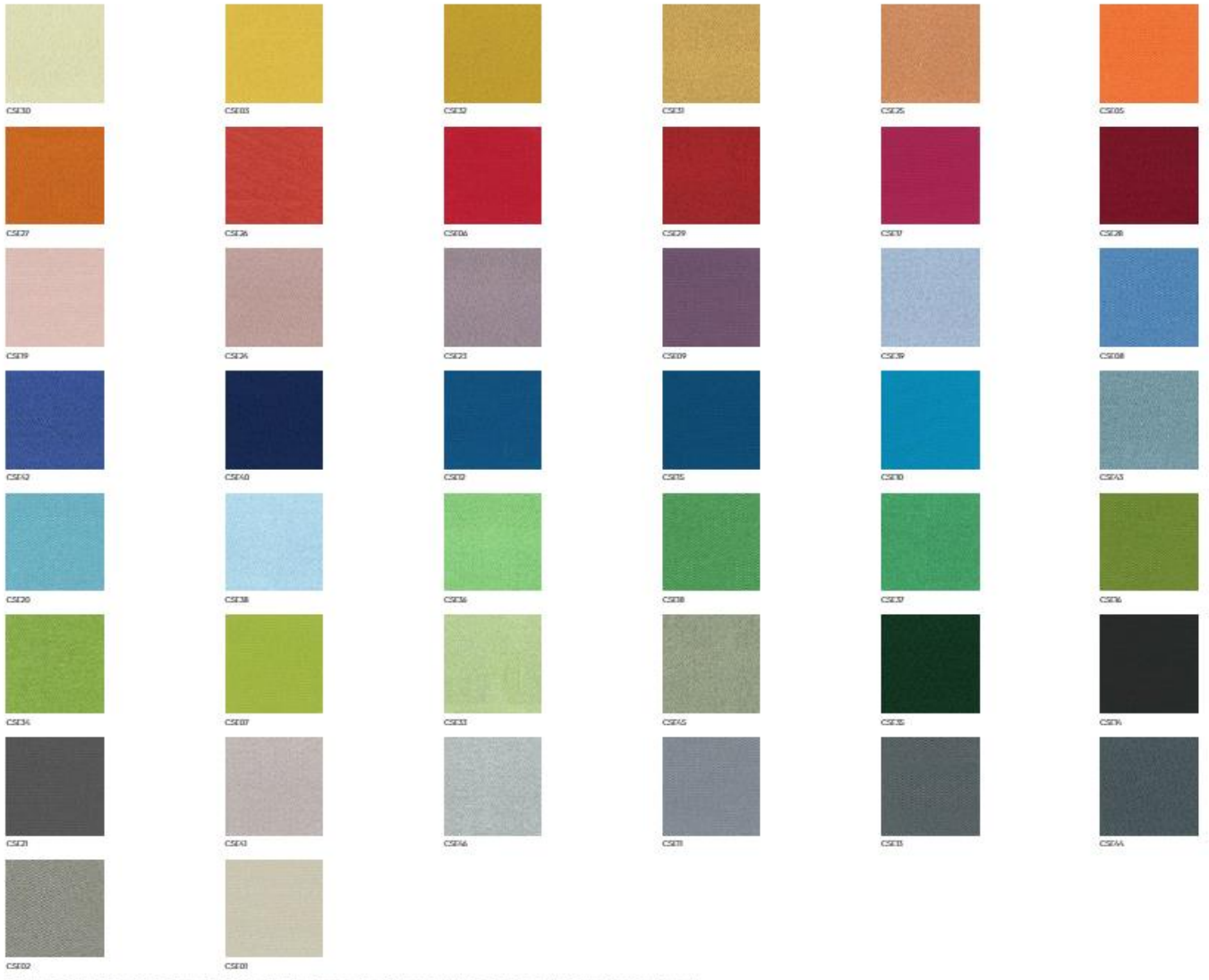
CR099

The colours presented do not constitute an offer within the meaning of law. Materials are displayed for reference only and may vary by browser, monitor, or printer from the actual material colour. Before specifying, refer to a physical sample.

Era - Studio Design

Composition: Polyester 100%, Weight: 220g/m<sup>2</sup> ±5%, Abrasion Resistance: 100.000 Martindale cycles (EN ISO 12947:1998), Fastness to Rubbing: 4 (ISO 105-X02:2002), Light Fastness: 5 (EN ISO 105-B02:2004), Flammability (IG-DIN 1021-1 / IG-DIN 1021-2 / ISO 15025:2007 Low Hazard) **DOWNLOAD**

\*Studio Design - Extended delivery time



The colors presented do not constitute an offer within the meaning of law. Materials are displayed for information only and may vary by factory, season, or price from the actual material used. Before specifying, refer to physical samples.

## Pastel

polyester 100% - TREVIRA CS, weight 260g/m<sup>2</sup> +/-5%, abrasion 70 000 Martindale cycles, resistance to 5 (EN ISO 12945), light fastness 6 (EN ISO 105-B02), non-flammability certificate (EN 1021-1, EN 1021-2; Crib 5; BS 7176 Medium Hazard; C1, M1, B1, IMO A 652(16), IMO A 471(XII)) [DOWNLOAD](#)



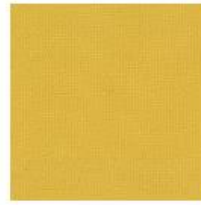
PA736



PA065



PA060



PA390



PA352



PA560



PA565



PA653



PA050



PA550



PA541



PA010



PA153



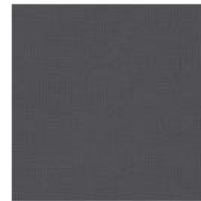
PA854



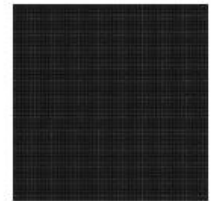
PA814



PA555



PA810



PA571



PA833

The colours presented do not constitute an offer within the meaning of law. Materials are displayed for reference only and may vary by browser, monitor, or printer from the actual material colour. Before specifying, refer to a physical sample.



## Roccia

100% polyester-TREVIRA CS weight 250g/m<sup>2</sup> +/-5%, abrasion 70 000 Martindale cycles (UNI EN ISO 12947/2), resistance to pilling 5 (EN ISO 12945/2), light fastness 6 (EN ISO 105-B02),fastness to rubbing wet:4 (UNI EN ISO 105-X12) dry:5 (UNI EN ISO 105-X12), non-flammability certificate: EN 1021-1:2006 EN 1021-2:2006 BS 7176:2007 (Medium Hazard); BS 5852:2006 (Crib 5); NFP 92-501-1 (M1), DIN 4102-1 (B1), IMO Res. A 652 (16) Part 8 UNI 9174-UNI 8456 (C1), AM 18(NF D 60013) UNI 9175 Class 1 IM **DOWNLOAD**



RC353



RC454



RC455



RC754



RC753



RC752



RC655



RC656



RC552



RC152



RC153



RC658



RC255



RC851



RC852



RC854

The colours presented do not constitute an offer within the meaning of law. Materials are displayed for reference only and may vary by browser, monitor, or printer from the actual material colour. Before specifying, refer to a physical sample.

**Valencia - Studio Design**

100% polyester-TREVIRA CS weight 220g/m<sup>2</sup> +/-2%, abrasion 30 000 Martindale cycles (EN EN ISO 12947/2), resistance to pilling 5 (EN EN ISO 12945/2), light fastness 6 (EN ISO 105-B02), fastness to rubbing wet-A (EN EN ISO 105-X02) dry-5 (EN EN ISO 105-X02), non-flammability certificate: EN 1021-1:2006 EN 1021-2:2006 BS 7176:2007 (Medium Hazard) BS 5822:2004 (2:2) S2 NF P 52-501-1 (M), DIN 4032-1 (B), IEC Res. A 662 (B) Part B UNI 9014-UNI 8156 (C), AM 181NF D 60013 UNI 915 Class 1 (M DOWN-OK)

\*Studio Design - Extended delivery time



The colors presented in this visualization are for reference only. The actual color of the fabric may vary slightly due to the lighting conditions and the way the fabric is presented. The actual color of the fabric may vary slightly due to the lighting conditions and the way the fabric is presented.

## Valencia

Surface-100% Vinyl, basic material - 100% Polyester Hi-Loft2, weight 650g/m2, abrasion 300 000 Martindale cycles (EN ISO 12947:1999 Part 2), light fastness >5, non-flammability certificate ((EN 1021-1; EN 1021-2; BS EN 1021-1/2; IMO A 652 (16)8.2-8.3; DIN EN 1021-1/2; DIN 410 B2; FAR 25.853 b(4) Ap.F Part.1 (a)(1)(ii)),



VL211



VL619



VL275



VL262



VL368



VL369



VL207



VL501



VL569



VL020



VL217



VL444



VL440



VL445



VL403



VL935

The colours presented do not constitute an offer within the meaning of law. Materials are displayed for reference only and may vary by browser, monitor, or printer from the actual material colour. Before specifying, refer to a physical sample.