

Fenno

100% Polyester , weight 402g/m2, Abrasion Resistance 100 000 Martindale cycles (EN ISO 12947-2), Pilling 4 (EN ISO 12945-2), Light fastness 5 (EN ISO 105-B02:2014), Fastness to Rubbing wet 4-5, dry 4-5 (EN ISO 105-X12) Flammability (BS 5852 Ignition Source 0, water repellent , Oekotex **DOWNLOAD**



FN 020



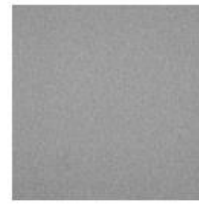
FN 019



FN 018



FN 017



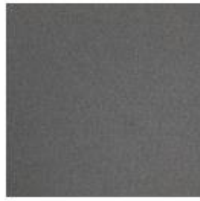
FN 005



FN 001



FN 002



FN 004



FN 012



FN 013



FN 014



FN 015

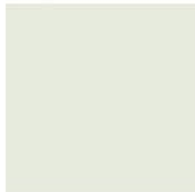


FN 016

The colours presented do not constitute an offer within the meaning of law. Materials are displayed for reference only and may vary by browser, monitor, or printer from the actual material colour. Before specifying, refer to a physical sample.

Keimo

surface 100% PU, basic material: 65% polyester, 35% cotton, weight 435 g/m2 +/-5%, abrasion >100 000 Martindale cycles (EN ISO 5470-2 method 1), light fastness >5(EN ISO 105 B 02), resistance to pilling 4-5 (EN ISO 105-X12), non- flammability certificat (BS 5852/DIN EN 1021-1) **DOWNLOAD**



KA 003



KA 085



KA 006



KA 210



KA 143



KA 050



KA 035



KA 032



KA 040



KA 009



KA 429



KA 120



KA 045



KA 755



KA 780



KA 250



KA 740



KA 710

The colours presented do not constitute an offer within the meaning of law. Materials are displayed for reference only and may vary by browser, monitor, or printer from the actual material colour. Before specifying, refer to a physical sample.

Alpa

Composition: 95% Polyester, 5% Acrylic, Weight 550 g/m² ± 5%, Roll width 140 cm, Abrasion resistance >50 000 cykli Martindale'a (EN ISO 12947-2), Pilling 4 (UNI EN ISO 12945-2), Light fastness 4 (EN ISO 105-B02), Fastness to rubbing Wet: 4-5 (ISO 105-X12), Dry: 4-5 (ISO 105-X12)



AP004



AP005



AP006



AP002



AP001

The colours presented do not constitute an offer within the meaning of law. Materials are displayed for reference only and may vary by browser, monitor, or printer from the actual material colour. Before specifying, refer to a physical sample.



CH 025



CH 031



CH 029



CH 028



CH 027



CH 036



CH 035



CH 037



CH 039



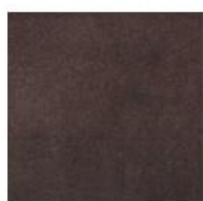
CH 043



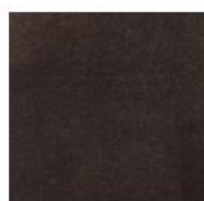
CH 042



CH 010



CH 011



CH 015



CH 016



CH 017



CH 018



CH 023



CH 019



CH 021



CH 020



CH 026



CH 003



CH 012



CH 014

Cura

Composition 98% recycled polyester, 2% polyester, Weight 300 g/m² ± 5%, Roll width 140 cm, Abrasion resistance 100 000 Martindale cycles (EN ISO 12947-2), Pilling 4-5 (EN ISO 12945-2), Light fastness 5-8 (EN ISO 105-B02), Fastness to rubbing Wet: 4-5 (EN ISO 105-X12) Dry: 4-5 (EN ISO 105-X12), Flammability • BS EN 1021-1 • BS EN 1021-2



CR158



CR157



CR160



CR133



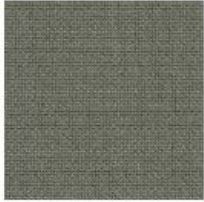
CR012



CR168



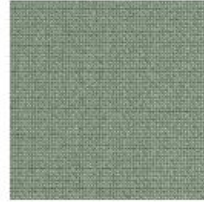
CR169



CR009



CR882



CR886



CR667



CR670



CR099

Pastel

polyester 100%- TREVIRA CS, weight 260g/m² +/-5%, abrasion 70 000 Martindale cycles, resistance to 5 (EN ISO 12945), light fastness 6 (EN ISO 105-B02), non-flammability certificate (EN 1021-1, EN 1021-2; Crib 5; BS 7176 Medium Hazard; C1, M1, B1, IMO A 652(16), IMO A 471(XII)) [DOWNLOAD](#)



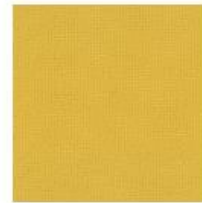
PA736



PA065



PA060



PA390



PA352



PA560



PA565



PA653



PA050



PA550



PA541



PA010



PA153



PA854



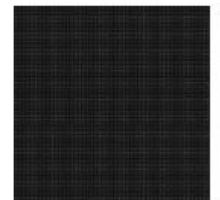
PA814



PA555



PA810



PA571



PA833

Roccia

100% polyester-TREVIRA CS weight 250g/m2 +/-5%, abrasion 70 000 Martindale cycles (UNI EN ISO 12947/2), resistance to pilling 5 (EN ISO 12945/2), light fastness 6 (EN ISO 105-B02),fastness to rubbing wet:4 (UNI EN ISO 105-X12) dry:5 (UNI EN ISO 105-X12), non-flammability certificate: EN 1021-1:2006 EN 1021-2:2006 BS 7176:2007 (Medium Hazard); BS 5852:2006 (Crib 5); NFP 92-501-1 (M1), DIN 4102-1 (B1), IMO Res. A 652 (16) Part 8 UNI 9174-UNI 8456 (C1), AM 18(NF D 60013) UNI 9175 Class 1 IM **DOWNLOAD**



RC353



RC454



RC455



RC754



RC753



RC752



RC655



RC656



RC552



RC152



RC153



RC658



RC255



RC851



RC852



RC854

The colours presented do not constitute an offer within the meaning of law. Materials are displayed for reference only and may vary by browser, monitor, or printer from the actual material colour. Before specifying, refer to a physical sample.