

Birch natural  
Ash natural  
Maple natural  
Oak natural



Birch stained black  
Ash stained black  
Walnut natural  
Oak stained black



Birch stained white  
Ash stained white  
Wenge natural  
Oak stained white



Birch stained grey  
Nano laminate white  
Nano laminate black  
Oak bleached



Laminate grey  
Laminate white  
Laminate black  
Other finishings



Special colours  
and stains  
on request



**CRISP**

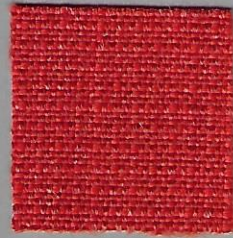
**COMPOSITION**  
**WIDTH**  
**ABRASION RESISTANCE**  
**FLAMMABILITY**

93% wool, 7% polyamide  
140 cm  
200.000 rubs Martindale  
BS 5852 Part 1 - 0,1 Cigarette & match  
BS EN 1021 1&2 • Calif. Bull. 117E  
IMO A.652 (16) MED Certificate IMO

**inno<sup>fi</sup>**

TEL 358-9-8870380  
FAX 358-9-88703833  
www.inno.fi  
E-mail: info@inno.fi

4430

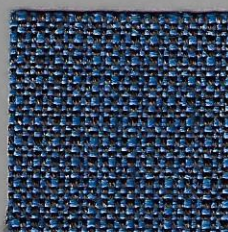


4431

4411

4127

4604

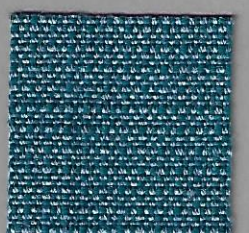
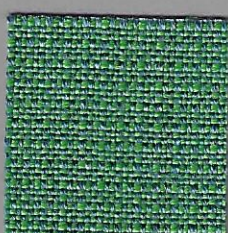
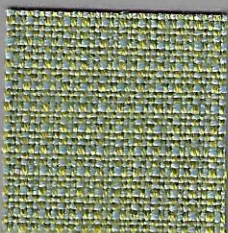
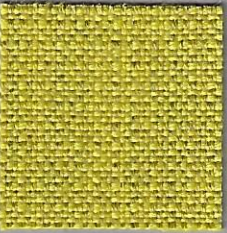


4601

4122

4126

4202

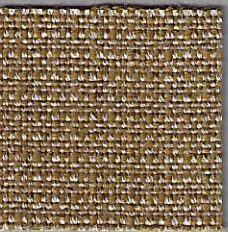
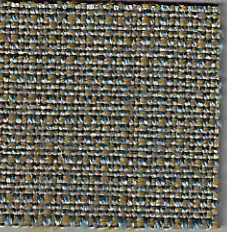


4201

4605

4602

4603

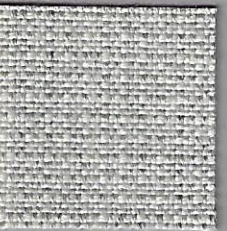


4114

4301

4121

4031

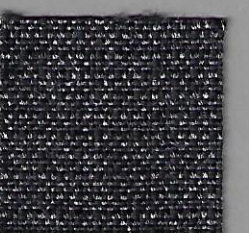
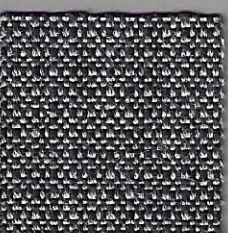
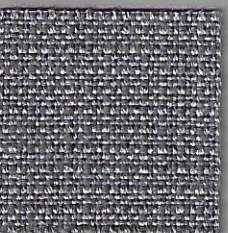
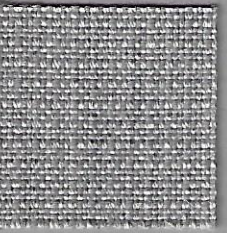


4032

4115

4120

4033



4021

4022

4011

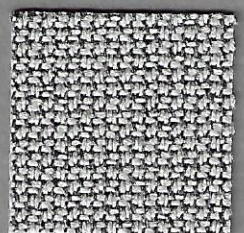
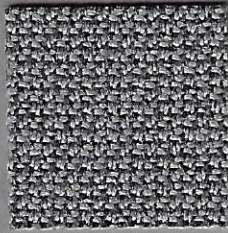
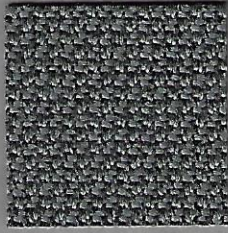


WIDTH  
ABRASION RESISTANCE  
FLAMMABILITY

140 CM  
100.000 RUBS MARTINDALE  
BS EN 1021 1&2, BS 5852 Part 1 0,1, CA TB 117-2013

TEL 358-9-8870380  
www.inno.fi  
E-mail: info@inno.fi

60109

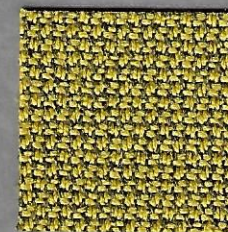
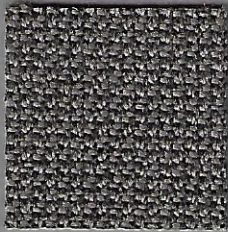


60110

60111

60112

61169

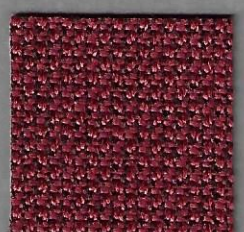
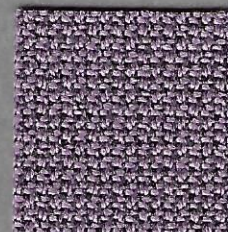
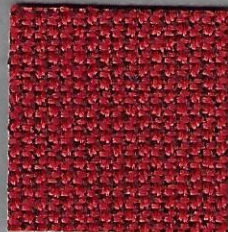


62082

62084

63012

63078

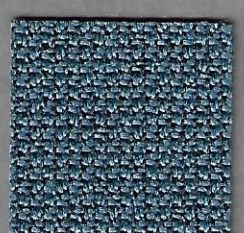


64013

64194

64196

65105

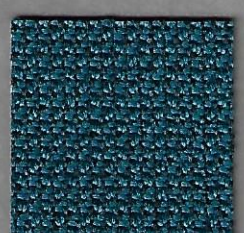
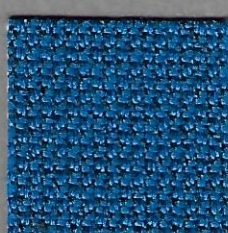


65106

66165

66167

66168

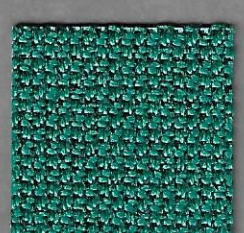
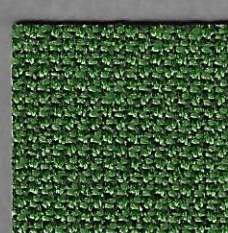
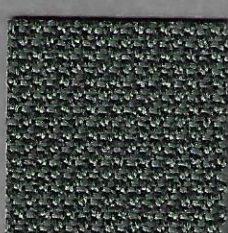
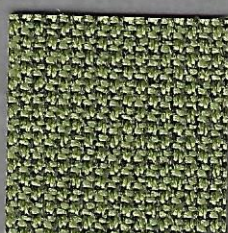


66169

66170

67084

68181



68182

68183

68185



# EASY

COMPOSITION

WIDTH

ABRASION RESISTANCE

FLAMMABILITY

85 % WOOL, 15 % POLYAMIDE

140 CM

150.000 RUBS MARTINDALE

BS EN 1021 1&2, BS 5852 Crip,

IMO FTP Code 2010: Part 8

# inno<sup>fi</sup>

TEL 358-9-8870380

[www.inno.fi](http://www.inno.fi)

E-mail: [info@inno.fi](mailto:info@inno.fi)

3027

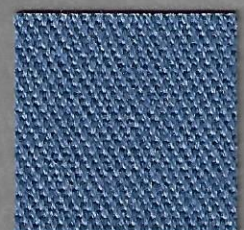


3070

3145

3263

3318

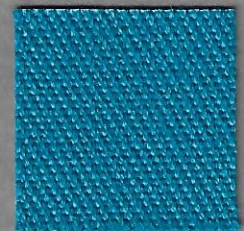


3536

3772

4342

4345

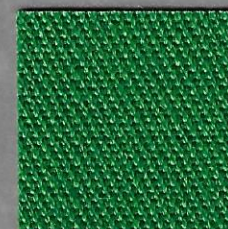


4380

4454

4625

4745

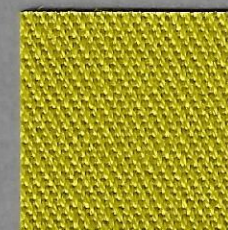
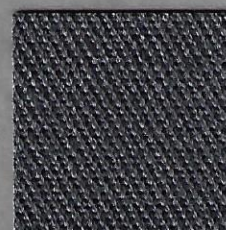
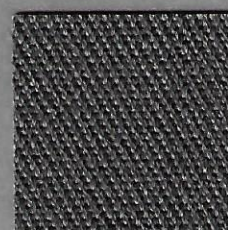


5863

5936

6036

6370

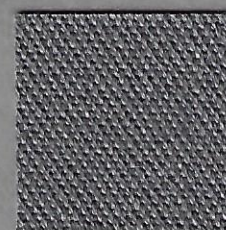
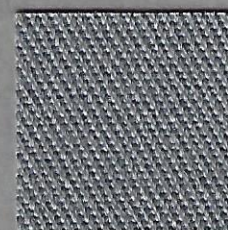


6380

6636

6727

8200



8500

8700

8900



**ELMO SOFT**

COMPOSITION  
LIGHTFASTNESS  
TEAR-STRENGTH  
THICKNESS

SEMI-ANILINE LEATHER  
6, METHOD ISO 105-B02  
20NJ/MM, METHOD DIN 53329  
1.0 - 1.2 MM

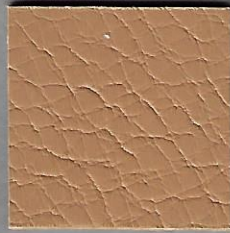
**inno<sup>fi</sup>**

TEL 358-9-8870380  
FAX 358-9-88703833  
www.inno.fi  
E-mail: info@inno.fi

02085



22030



33004



33001



44012



45050



54035



93129



45065



35126



55002



98015



87088



77158



77127



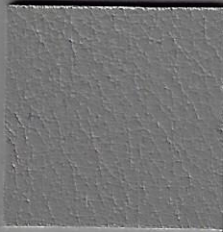
97038



17027



11049



71017



99999



00100



05011



01037



01061





ABRASION RESISTANCE  
FLAMMABILITY

50.000 rubs Martindale  
BS 5852 Part1 0,1 Cigarette & match •  
Calif. Bull. 117E • Önorm B3825 B1 3800-Q1 UK •  
BS EN 1021 1&2 • UNI 9175 Class 1 I EMME •  
IMO A.652 (16) MED Certificate IMO

FAX 358-9-88703833  
www.inno.fi  
E-mail: info@inno.fi

63016



64070

64149

64035

65069

65071

66116

66039



68128

68030

67016

66115

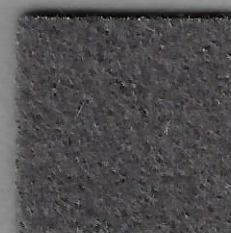
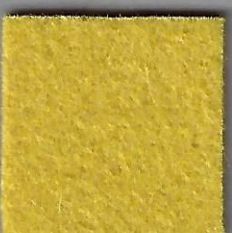


62061

68126

61003

61052



60000

61107

61004

61109

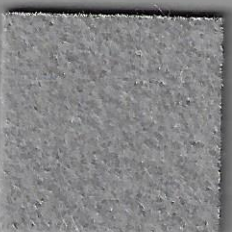


60003

66056

60058

60999





**EVENT**

COMPOSITION  
WIDTH  
ABRASION RESISTANCE  
FLAMMABILITY

100% polyester  
140 cm  
100.000 rubs Martindale  
BS EN 1021 1&2 • Calif. Bull. 117E  
AM18 - NF D 60-013

**inno<sup>fi</sup>**

TEL 358-9-8870380  
FAX 358-9-88703833  
www.inno.fi  
E-mail: info@inno.fi

62013



63013

64032

64031

64030

65017

65018

66034

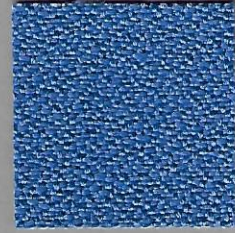


66036

66038

66035

66033

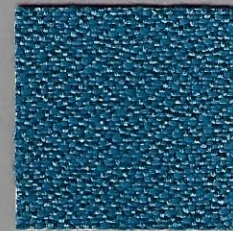
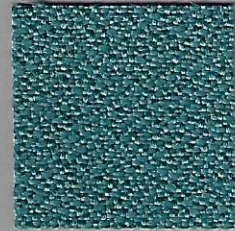


68032

67019

67018

66037

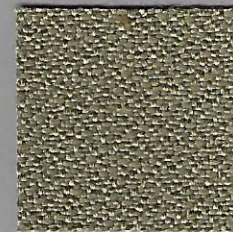
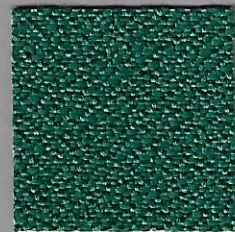
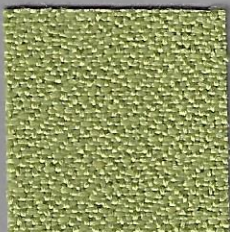


68033

67020

61032

61031

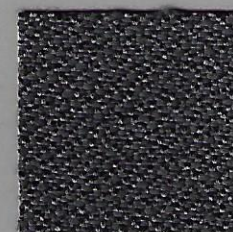
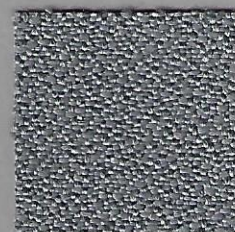


60000

60022

60023

60999



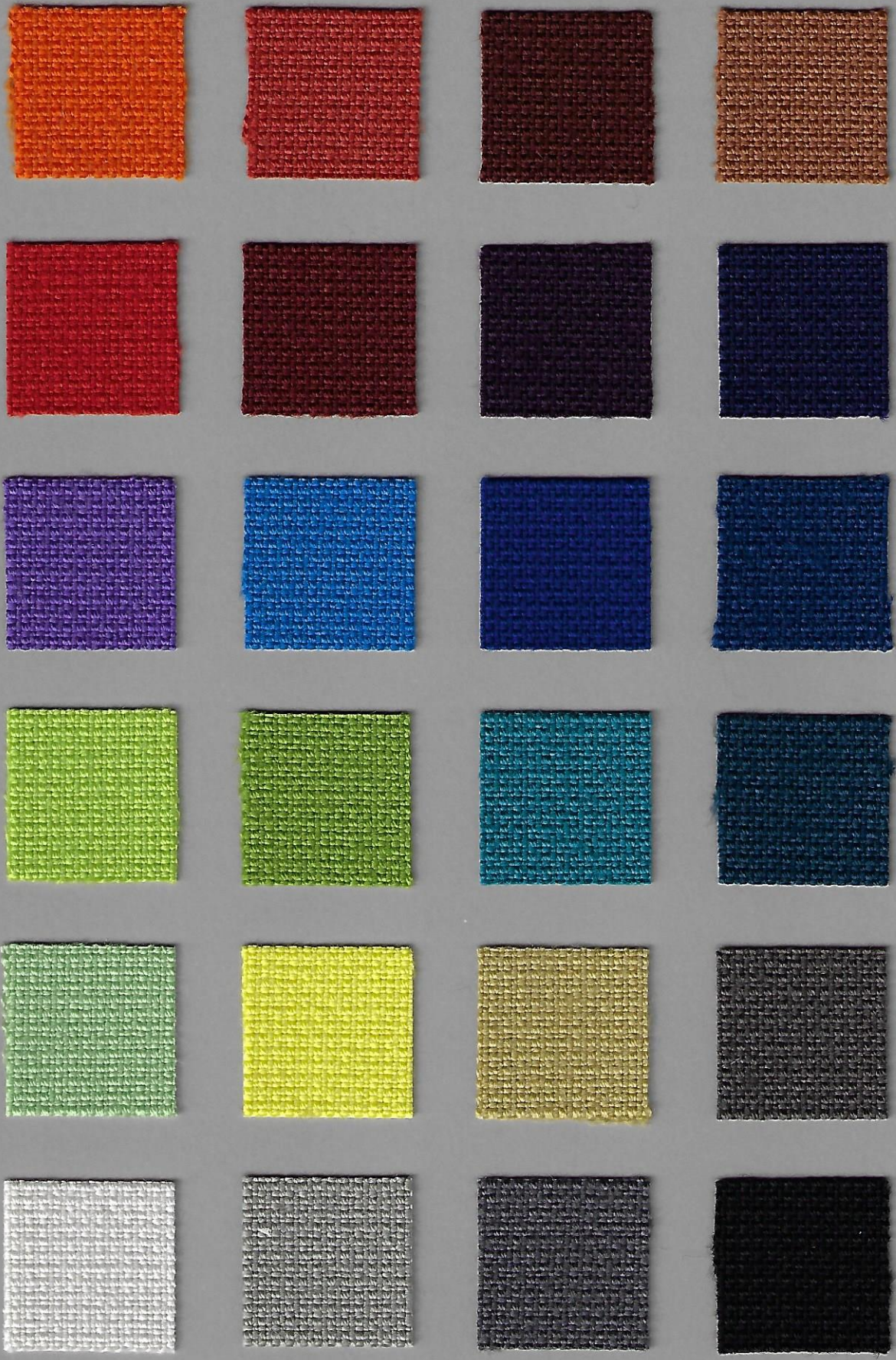


ABRASION RESISTANCE  
FLAMMABILITY

200.000 rubs Martindale  
BS 5852 Part 1 - 0,1 Cigarette & match  
BS EN 1021 1&2 • BS 5852, Crib 5 • Calif. Bull. 117E  
UNI 9175 Class 1 I EMME • AM18 - NF D 60-013  
IMO A.652 (16) MED Certificate IMO

FAX 358-9-88703833  
www.inno.fi  
E-mail: info@inno.fi

63016  
64168  
61047  
61131  
  
64089  
64167  
64055  
66132  
  
65084  
66131  
66032  
66071  
  
68144  
68035  
67016  
67005  
  
68147  
62067  
62068  
61060  
  
60005  
61136  
60003  
60999





## HERITAGE

### COMPOSITION

Blend	90 % WOOL, 10 % POLYAMIDE
Botany, Medio, Pelo	89 % WOOL, 11 % POLYAMIDE
Kipper	88 % WOOL, 12 % POLYAMIDE
Dobby, Stich, Tailor, Tint, tuck	85 % WOOL, 15 % POLYAMIDE

WIDTH 150 CM

### ABRASION RESISTANCE

Blend 45.000 RUBS MARTINDALE

Kipper, Tailor 60.000 RUBS MARTINDALE

Medio, Pelo, Tuck 100.000 RUBS MARTINDALE

Botany, Stich 130.000 RUBS MARTINDALE

Dobby, Tint 140.000 RUBS MARTINDALE

### FLAMMABILITY

BS EN 1021 1&2, IMO FTP Code 2010: Part 8

BS EN 1021 1&2, IBS 5852 Crip 5,

IMO FTP Code 2010: Part 8 (Tint)

# inno<sup>fi</sup>

TEL 358-9-8870380

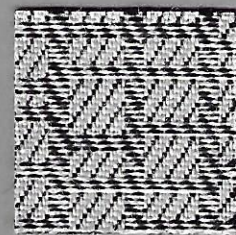
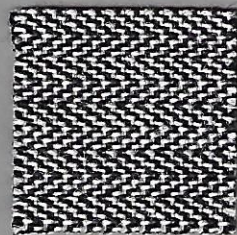
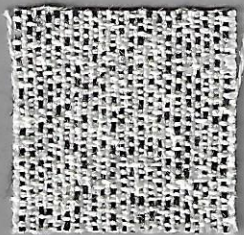
www.inno.fi

E-mail: info@inno.fi

BLEND 2000

BOTANY 8600

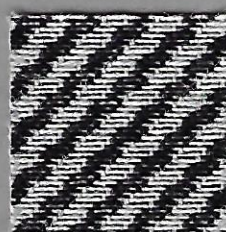
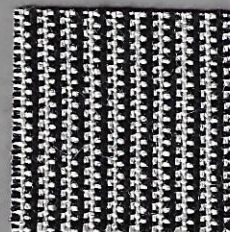
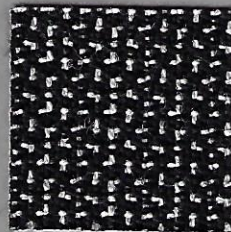
DOBBY 8600



KIPPER 8800

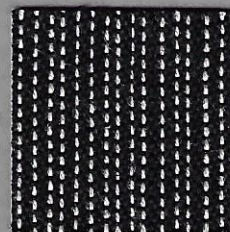
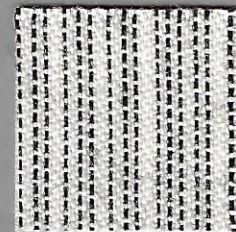
MEDIO 8600

PELO 8600



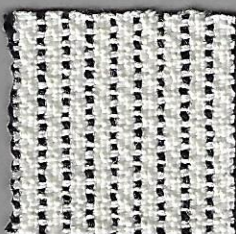
STITCH 2000

STITCH 8900



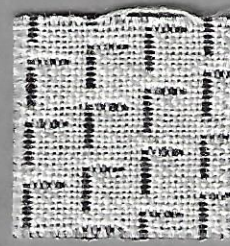
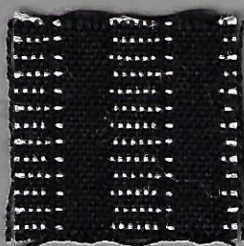
TAILOR 2000

TAILOR 8800



TINT 8800

TUCK 2000





# MAIN LINE FLAX

COMPOSITION

WIDTH

ABRASION RESISTANCE

FLAMMABILITY

70 % PURE NEW WOOL, 30 % FLAX

140 CM

100 000 RUBS

CALIFORNIA TECHNICAL BULLETIN 117 - 2013,

NFPA 260 + UFAC CLASS 1, BS7176 LOW

HAZARD, ASTM E84 CLASS 1 OR A,

ASTM E84 CLASS 2 OR B

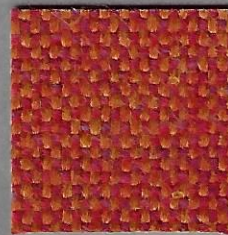
# inno<sup>fi</sup>

TEL 358-9-8870380

www.inno.fi

E-mail: info@inno.fi

MLF01



MLF03

MLF13

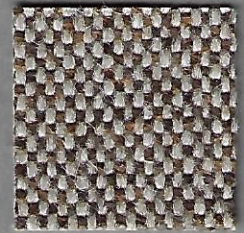
MLF14

MLF12

MLF15

MLF20

MLF23

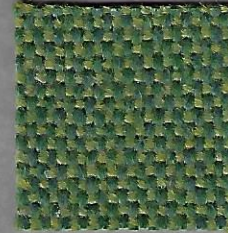
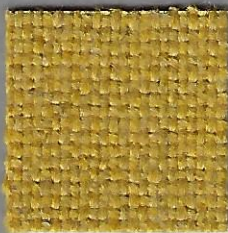


MLF17

MLF09

MLF18

MLF24



MLF32

MLF34

MLF35

MLF36

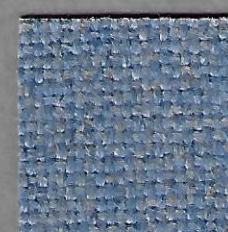
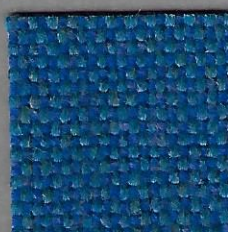


MLF05

MLF19

MLF21

MLF22

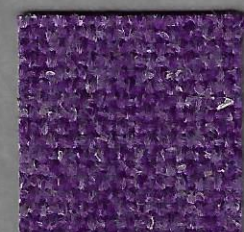
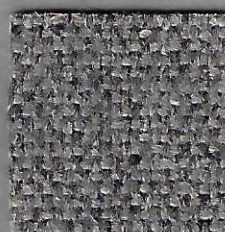
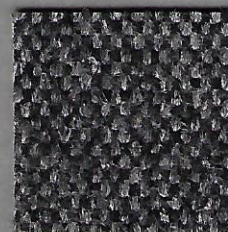


MLF16

MLF26

MLF28

MLF33

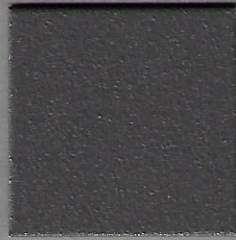




Effect black  
RAL 9005



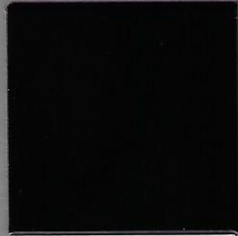
Metallic grey  
RAL 9007



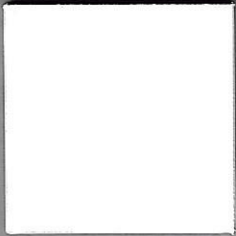
Crystal aluminium  
Silver aluminium



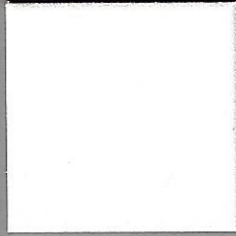
Matte black  
RAL 9005



Matte white  
RAL 9010



Effect white  
RAL 9010



### FELT

KOLA SEAT MATERIAL  
COMPOSITION  
FLAMMABILITY

100% PES  
EN 1021-1 AND EN 1021-2 IGNITABILITY

Black



Anthracit grey





# REPETTO

COMPOSITION

WIDTH

ABRASION RESISTANCE

FLAMMABILITY

100 % POST-CONSUMER RECYCLED POLYESTER

140 CM

100.000 RUBS MARTINDALE

BS EN 1021 1&2, BS 5852 Part 1 0,1,

CA TB117-2013

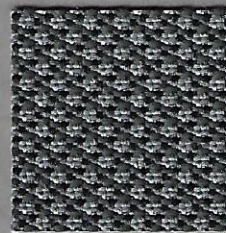
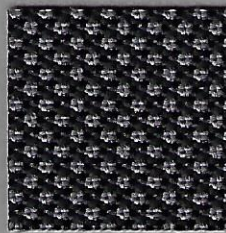
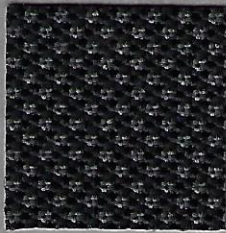
# inno<sup>.fi</sup>

TEL 358-9-8870380

[www.inno.fi](http://www.inno.fi)

E-mail: [info@inno.fi](mailto:info@inno.fi)

1101

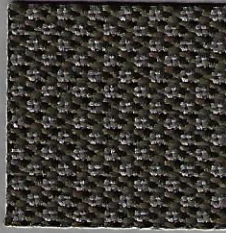
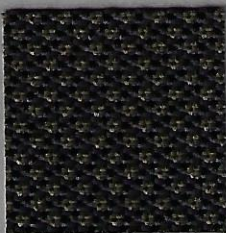


1201

1301

1401

1501

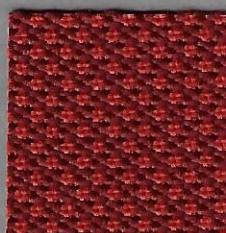
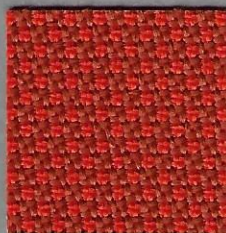
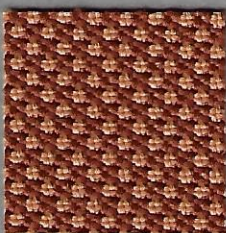


1601

1701

1801

1901

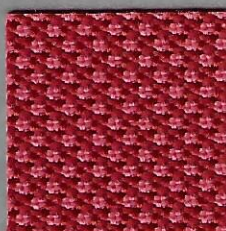
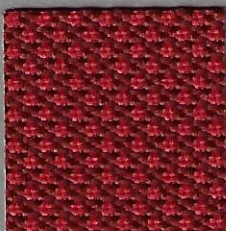


2001

2101

2201

2301

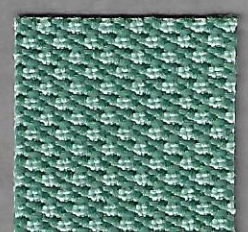
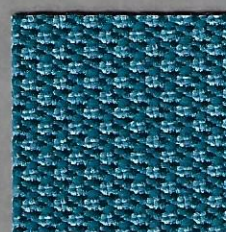
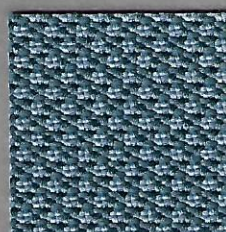


2401

2501

2601

2701

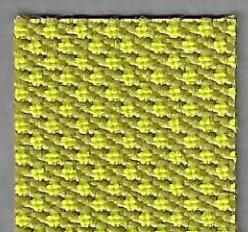
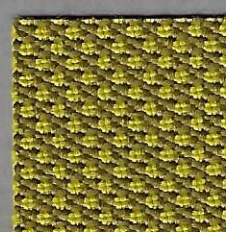
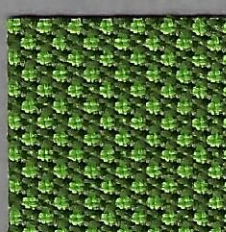


2801

2901

3101

3201



3301

3401

3501



**ROCK**

COMPOSITION

WIDTH

ABRASION RESISTANCE

FLAMMABILITY

85 % WOOL, 15 % POLYAMIDE

140 CM

50.000 RUBS MARTINDALE

BS EN 1021 1&2, IMO FTP Code 2010: Part 8

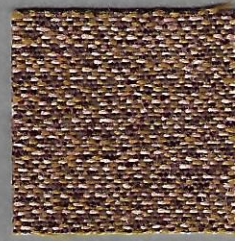
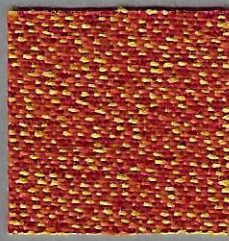
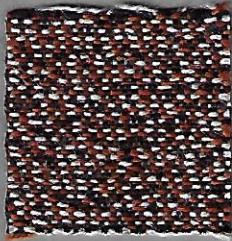
**inn**

TEL 358-9-8870

www.inno.fi

E-mail: info@inn

3072

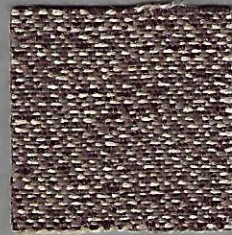


3227

3252

3427

3461

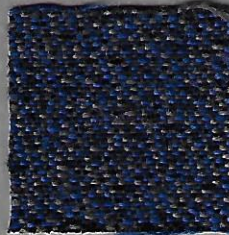
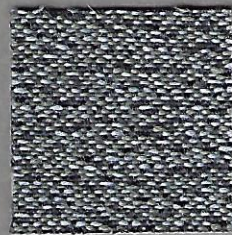


4343

4352

4380

4451

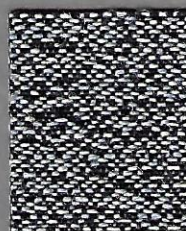
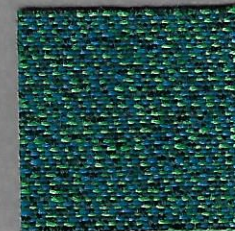
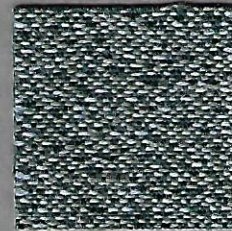


4471

4472

4654

5051

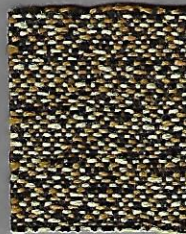
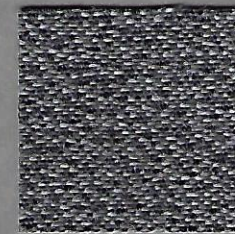
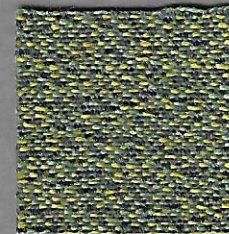
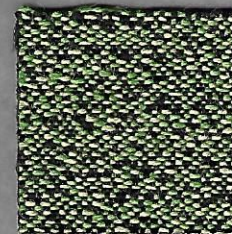


5251

5345

5360

6045

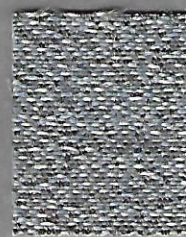
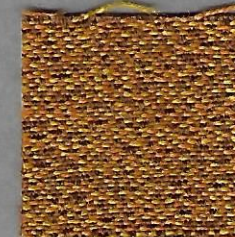
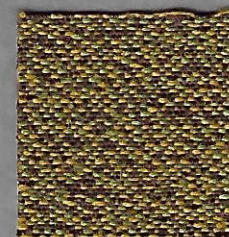
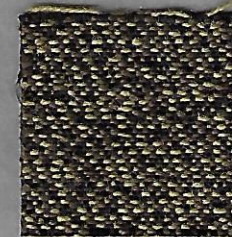


6242

6360

6562

6572



6645

6755

6760



# STEELCUT TRIO 2

COMPOSITION

WIDTH

ABRASION RESISTANCE

FLAMMABILITY

90% New wool, worsted. 10% Nylon

140 CM

100.000 Rubs Martindale

EN 1021-1/2, BS 5852 ig. s. 2-3,

DIN 4102 B2, ÖNORM B1 / Q1, IMO A.652(16),

UNI 9175 11M, US Cal. Tech. Bull. 117, NFPA 260,

AS/NZS 3837 Class 2, NF D 60 013

# inno<sup>fi</sup>

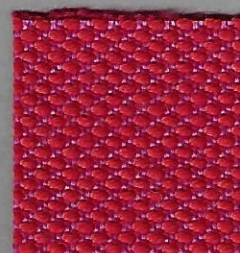
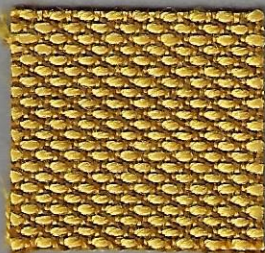
TEL 358-9-8870380

FAX 358-9-8870383

www.inno.fi

E-mail: info@inno.fi

453

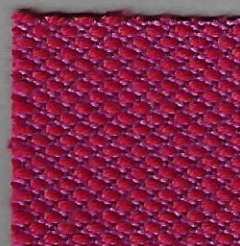
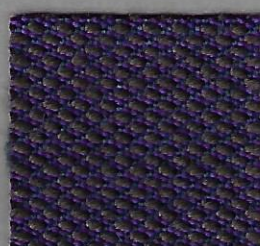
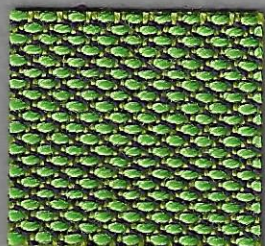


515

533

553

953

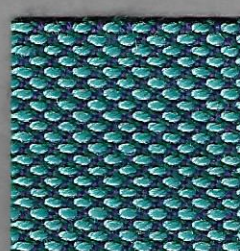


933

683

653

853

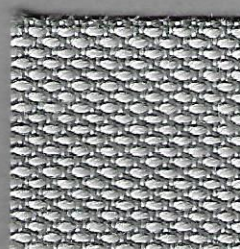
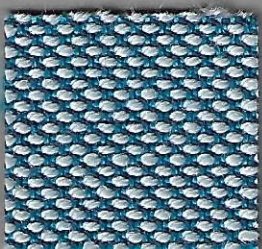


883

865

983

845

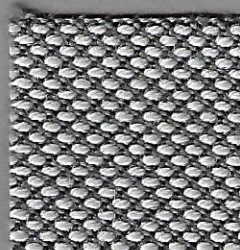
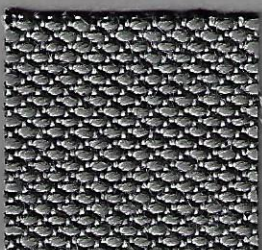


733

815

113

383

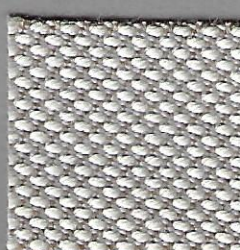


153

124

133

195



253

213

205



# STEP MELANGE

COMPOSITION

WIDTH

ABRASION RESISTANCE

FLAMMABILITY

100 % Trevira CS

140 cm

100.000 rubs Martindale

EN 1021 1&2 - BS 5852 crib 5 - FAR/JAR 25853 -

DIN 4102:B1 - NFP 92-503:M1 - BS 7176 Med.Hazard -

IMO MSC 307(88) Annex1 p8 - MED Certificate IMO -

UNI 9175 class 1 I EMME - Calif. Tech. Bull. 117,E -

Önorm 3825 B1/Q1 - BS 5852 P1 0&1.

# inno<sup>fi</sup>

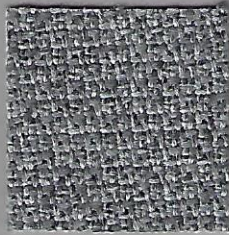
TEL 358-9-8870380

FAX 358-9-88703833

www.inno.fi

E-mail: info@inno.fi

60004



60011

60021

66019

61103

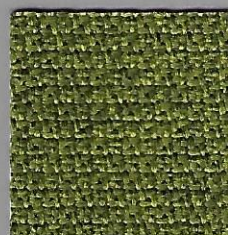


61102

63075

64159

61104

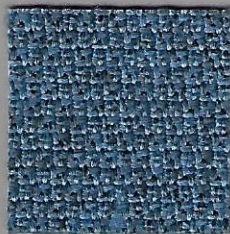


62057

68119

68121

67004



66018

67007

65011



**STEP**

**COMPOSITION**  
**WIDTH**  
**ABRASION RESISTANCE**  
**FLAMMABILITY**

100 % Trevira CS  
140 cm  
100.000 rubs Martindale  
EN 1021 1&2 - BS 5852 crib 5 - FAR/JAR 25853 -  
DIN 4102:B1 - NFP 92-503:M1 - BS 7176 Med.Hazard -  
IMO Res. A 652 (16) - MED Certificate IMO -  
UNI 9175 class 1 I EMME - Calif. Tech. Bull. 117,E -  
Önorm 3825 B1/Q1 - BS 5852 P1 0&1.

**inno<sup>fi</sup>**

TEL 358-9-8870380  
FAX 358-9-88703833  
www.inno.fi  
E-mail: info@inno.fi

60004



60011

66019

60999

61104

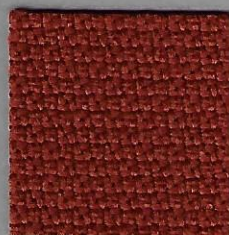
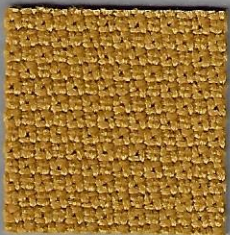


61103

61102

60021

62056

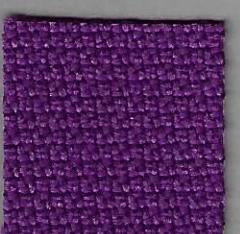


62057

63075

63012

64013



64159

65047

65023

67004

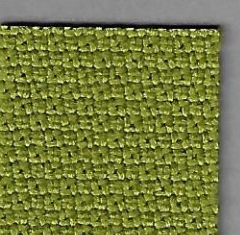
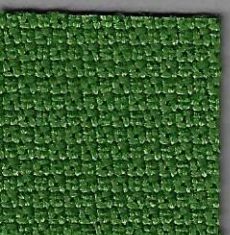
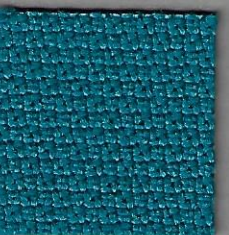


66018

65011

65018

67007



68120

68121

68119