

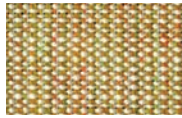
Designer: Giulio Ridolfo
 Composition: 90% New wool worsted, 10% Nylon
 Height: 140 cm
 Selvedge: †
 Weight: 480 g/mtl

Light resistance: 6-7 (ISO 1-8)
 Abrasion: 100000 Martindale
 Colour: there may be slight differences

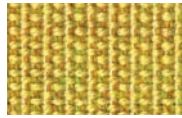
The environment: In compliance with EU environmental regulations
 Fireproof test AS/NZS 1530.3
 BS 5852 ig. s. 2-3

DIN 4102 B2
 EN 1021-1/2
 IMO A.652(16)
 NF D 60 013
 NFPA 260
 UNI 9175 1M

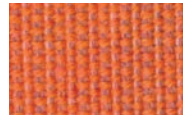
US Cal. Tech. Bull. 117
 ONORM B1/Q1



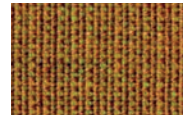
CV414



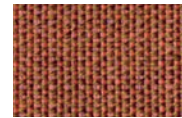
CV446



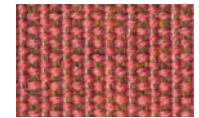
CV546



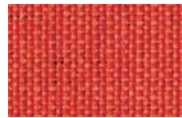
CV424



CV454



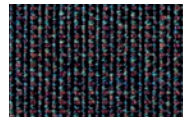
CV576



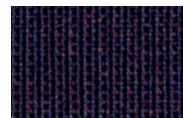
CV644



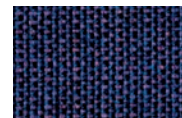
CV674



CV364



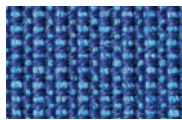
CV694



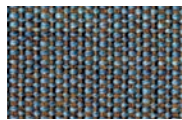
CV684



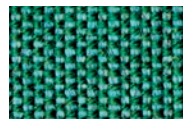
CV794



CV746



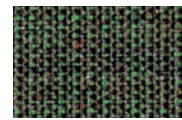
CV734



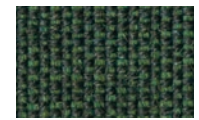
CV836



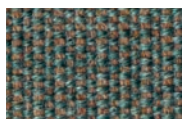
CV926



CV974



CV996



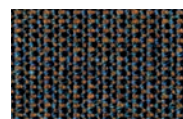
CV936



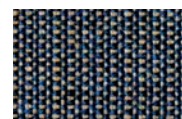
CV964



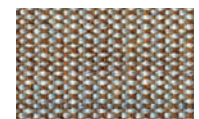
CV264



CV764



CV854



CV244



CV224



CV614



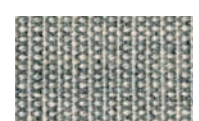
CV716



CV216



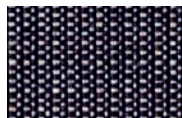
CV114



CV124



CV134



CV154



CV174

G Divina 3

kvadrat

Designer: Finn Sködt
Composition: 100% Wool
Height: 150 cm
Selvedge: ↓
Weight: 840 g/m²
Light resistance: 5-7 (ISO 105-B02)

Abrasion: 45000 Martindale
Colour: there may be slight differences.
The light colours may contain dark fibres.
The environment: Naturele fibres / renewable resource

Fireproof test
AS/NZS 1530.3
BS 5852 ig. s. 5
BS 5867, part 2, type B
DIN 4102 B2, ÖNORM B1/Q1
EN 1021-1/2

EN 13501, C-s1, d0, glued
IMO A.652(16)
NF D 60 013
NFPA 260
UNI 9175, 11M
US Cal. Tech. Bull. 117



DV106



DV171



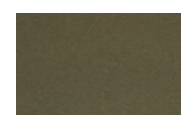
DV173



DV191



DV236



DV356



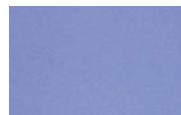
DV426



DV542



DV623



DV676



DV684



DV696



DV886



DV893



DV936

G Divina Melange 3

kvadrat

Designer: Finn Sködt
Composition: 100% Wool
Height: 150 cm
Selvedge: ↓
Weight: 840 g/mtl
Light resistance: 5-7 (ISO 105-B02)

Abrasion: 45000 Martindale
Colour: there may be slight differences.
The environment: Naturele fibres / renewable resource
Fireproof test AS/NZS 1530.3

BS 5852 ig. s. 5
BS 5867, part 2, type B
DIN 4102 B2, ÖNORM B1/Q1
EN 1021-1/2
EN 13501, C-s1, d0, glued
IMO A.652(16)
NF D 60 013

NFPA 260
UNI 9175, 11M
US Cal. Tech. Bull. 117



DM120



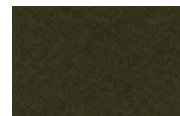
DM180



DM260



DM427



DM471



DM547



DM571



DM647



DM731



DM871

B Eco Leather



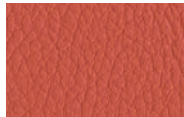
Composition: 76%PVC - 2%PU - 22%PES
 Width: 140 cm
 Weight: g/m² 540 +/-10
 Cycles (ISO 5470-2): 60000
 Colour fastness to dry rubbing (ISO 105-X12): 4/5
 Colour fastness to wet rubbing (ISO 105-X12): 4/5
 Colour fastness to light (Xenotest - blu scale) (ISO 105-B02): 6

Adhesion (ISO 2411): > 40
 Tensile strenght (UNI EN ISO 1421): 600 long.
 Tensile strenght (UNI EN ISO 1421): 310 trasv.
 Elongation at break % (UNI EN ISO 1421): 57 long.
 Elongation at break % (UNI EN ISO 1421): 120 trasv.
 Tear strenght (UNI EN ISO 4674): 50 long.
 Tear strenght (UNI EN ISO 4674): 50 trasv.

Cycles (UNI 4818-13): 100000
 Fireproof test: EN 1021-2:2006 / UNI 9175 classe 1 IM /
 BS5852-1:1979 part 1 - TB 117:2013



SE1007



SE1008



SE1009



SE1019



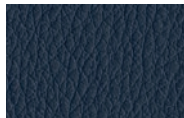
SE1033



SE1035



SE1030



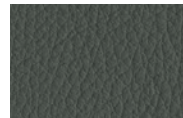
SE1014



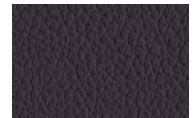
SE1021



SE1031



SE1012



SE1023



SE1006



SE1018



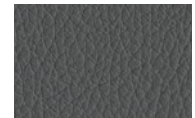
SE1002



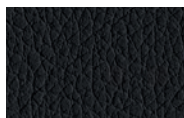
SE1001



SE1015



SE1024



SE1017

G Fiord

kvadrat

Designer: Louise Sigvardt & Tone Barnung
Composition: 92% Wool, 8% nylon
Width: 140 cm
Selvedge: †
Weight: 500 g/mtl

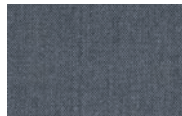
Light resistance: 5-7 (ISO 105-B02)
Abrasion: 60000 Martindale
Colour: there may be slight differences.
The environment: Nature fibres / renewable resource

Fireproof test
BS 5852 Crib 5 with treatment
BS 5852 part 1
DIN 4102 B2
EN 1021-1/2
IMO FTP Code 2010 Part 8

NF D 60 013
UNI 9175 1IM
US Cal. Bull. 117-2013
AS/NZS 3837, class 2



FO101



FO171



FO191



FO271



FO451



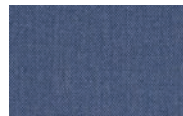
FO521



FO581



FO751



FO771



FO971



FO991

H

Full-grain leather



PR
Red



PC
Cuoio



PB
Beige



PW
White



PT
Dove grey



PTM
Dark brown



PN
Nero

Designer: Raf Simons &
Fanny Aronsen
Composizione: 100%
Cotone
Larghezza: 140 cm
Cimosa: ¹
Peso: 520 g/mtl

EN 13501, C-s1, d0,
glued
IMO A.652(16)
NF D 60 013
NFPA 260
UNI 9175, 1IM
US Cal. Tech. Bull. 117

Resistenza alla luce:
5-6 (ISO 105-B02)
Abrasion: 100000
Martindale
Colore: possono
riscontrarsi lievi
differenze

L'ambiente: Fibre
naturali / risorsa
rinnovabile
Fireproof test
AS/NZS 1530.3
BS 5852 lg. s. 5
BS 5867, part 2, type B

DIN 4102 B2, ÖNORM
B1/Q1
EN 1021-1/2

**HA432****HA512****HA343****HA182****HA952****HA133****HA212****HA283****HA982****HA582**

E Oceanic

Composition: 100%
post-consumer recycled
polyester, including 50%
SEAQUAL yarn
Weight per square meter:

497 g/m2 ±5% Heavy
duty / 10 year guarantee.
Independently
certified to ≥100,000
Martindale cycles

Fastness to Rubbing: Wet: 4,
Dry: 4 (ISO 105 - X12)
Flammability: EN 1021 - 1&2
Cigarette & Match
BS 7176 Low Hazard



OC01



OC02



OC03



OC04



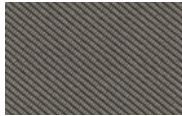
OC05



OC06



OC07



OC08



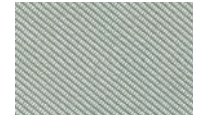
OC10



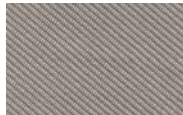
OC11



OC12



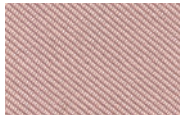
OC13



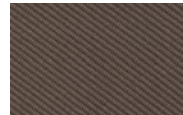
OC14



OC15



OC16



OC09

G **Patio**

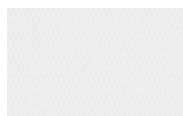
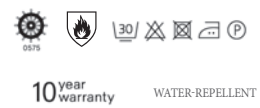
kvadrat

Designer: Karina Nielsen
 Rios
 Composition: 100% Trevira
 CS
 Height: 140 cm
 Selvedge: ↔
 Weight: 560 g/lin.m

Light resistance: 7 (ISO
 105-B02)
 Abrasion: 50000 Martindale
 Colour: there may be slight
 differences.
 The light colours may
 contain dark fibres.

The environment: In
 compliance with EU
 environmental regulations
 Fireproof test
 BS 5852 ignition source 5
 BS 5852 part 1 ignition
 source 0

DIN 4102 B1, EN 1021-1/2
 IMO FTP Code 2010 Part 8
 NF D 60 013
 NF P 92 507 M1
 UNI 9175 1IM
 US Cal. Bull. 117-2013
 ÖNORM B1/Q1



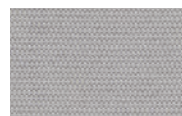
PA100



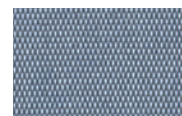
PA110



PA140



PA150



PA170



PA200



PA210



PA220



PA230



PA340



PA370



PA410



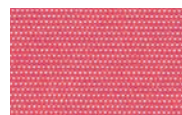
PA430



PA440



PA450



PA550



PA570



PA650



PA730



PA740



PA750



PA780



PA840



PA970

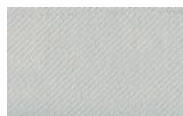
D Reflect

kvadrat

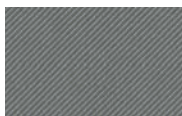
Designer: Patricia Urquiola
Composition: 100% poliestre riciclato
Height: 140 cm
Selvedge: ⇄
Weight: 430 g
Light resistance: 6-7

(ISO 1-8)
Abrasion: 100.000
Martindale
Colour: there may be slight differences.
Fireproof test
AS/NZS 3837

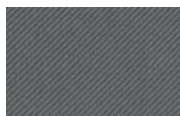
class 1, ASTM E84 Class A
ASTM E84 Class B incollato
BS 5852 crib 5 con
trattamento ignifugo, BS
5852 part 1 con trattamento
ignifugo, EN1021-1/2, US Cal.
Bull.117-2013



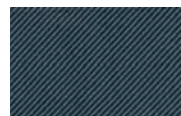
RF104



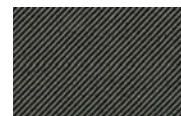
RF154



RF164



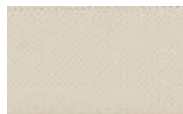
RF174



RF184



RF194



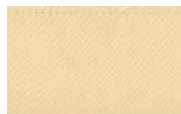
RF204



RF224



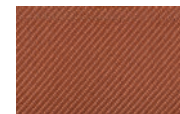
RF274



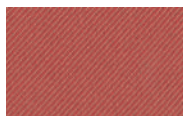
RF404



RF444



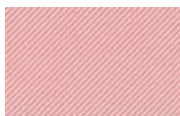
RF464



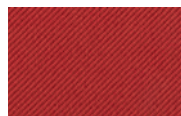
RF564



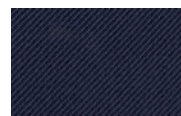
RF574



RF614



RF644



RF694



RF714



RF774



RF944



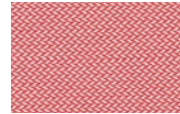
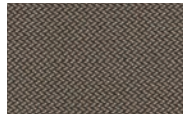
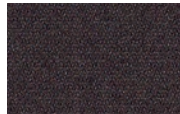
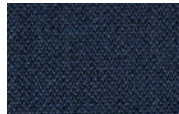
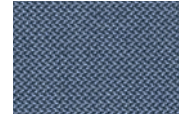
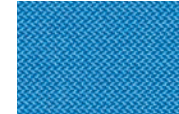
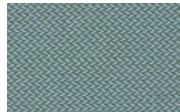
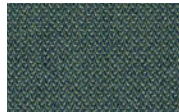
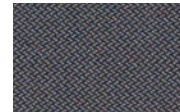
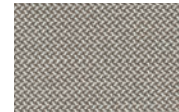
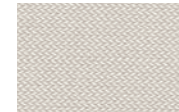
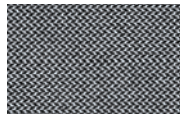
RF994

Designer: Georgina Wright
Composition: 100% Recycl.
polyester FR
Height: 140 cm
Selvedge:
Weight: 420 g/lin.m

Light resistance: 5-7
(ISO 1-8)
Abrasion: 80.000 Martindale
Colour: there may be slight
differences
The enviroment: reduced

environmental impact
Fireproof test
BS 5852 part 1, ig. s. 0
DIN 4102 B1
EN 1021-1/2
IMO FTP Code 2010 Part 8

NF D 60 013 with treatment
UNI 9175 11M
US Cal. Bull. 117-2013
ÖNORM B1/ Q1

**RV424****RV634****RV664****RV524****RV414****RV454****RV274****RV384****RV184****RV774****RV764****RV754****RV834****RV944****RV974****RV284****RV324****RV224****RV144****RV164****RV194**

C Step

Gabriel®

Composition: 100% Trevira
Total width: 140 cm
Width: 140 cm
Abrasion: rubs martindale
(EN ISO 12947-2)
100,000 double rubs

wyzenbeek (ASTM D4157-07) (heavy duty upholstery)
100,000
Pilling: scale 1-5, max. 5 - EN ISO 12945-2
Light fastness: scale 1-8,

max. 8 - EN ISO 105 B02
Rubbing fastness: scale 1-5, max. 5 - EN ISO 105x12 (wet/dry) 4-5/4-5
Maintenance:wash or dry cleaning P(W).

Step is made of Trevira CS which is a polyester material suited for environments with special requirements for cleaning.



ST60011



ST60021



ST60091



ST60999



ST61149



ST62057



ST63075



ST64013



ST64159



ST64178



ST65011



ST65047



ST66148



ST67004



ST68118



ST68121



ST68159



ST68161





SM60004



SM60021



SM60092



SM61103



SM61149



SM61150



SM61151



SM61152



SM62057



SM64159



SM64178



SM64179



SM64181



SM65011



SM65047



SM66018



SM67004



SM68119



SM68158



SM68165

A Space

Composizione: 100% PPR
Altezza: 140 cm
Peso al metro quadro: 240 g/m² (± 4%) (UNI 5114)
Resistenza alla luce: 4-5 (ISO 105 B02)

Abrasion: 25.000 Martindale
Pilling: 4-5 (ISO 12945-2)
Solidità allo sfregamento: 4-5 (Asciutto) 4 (Bagnato) ISO 105-X12
Composition: 100% PPR
Height: 140 cm

Weight per square meter: 240 g/m² (± 4%) (UNI 5114)
Light resistance: 4-5 (ISO 105 B02)
Abrasion: 25.000 Martindale
Pilling: 4-5 (ISO 12945-2)
Fastness to rubbing: 4-5 (Dry) 4

(Wet) ISO 105-X12



No-shrink



SP900



SP801



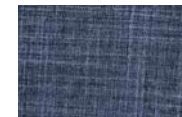
SP800



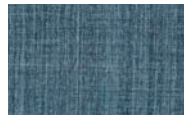
SP708



SP705



SP704



SP702



SP700



SP605



SP604



SP602



SP600



SP504



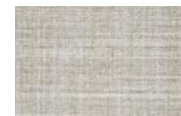
SP406



SP403



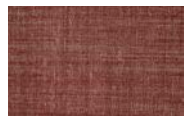
SP402



SP400



SP304



SP303



SP302



SP111



SP100

E Yoredale

camira

Composition: 95% Wool, 3% Polyester, 2% Polyamide
Total width: 138 cm minimum
Weight per linear meter: 700 g/m2 ±5%
("Martindale") Abrasion

resistance. Heavy duty / 10 year guarantee. Independently certified to ≥50,000 Martindale cycles

Flammability
EN 1021 - 1&2 Cigarette & Match
BS 7176 Low Hazard
ONORM B 3825 & A 3800-1 (58kg/m3 CMHR Foam)

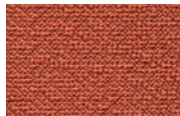
UNI 9175 Classe 1 IM
BS 5852 Ignition Source 5 when FR treated BS 7176 Medium Hazard when FR treated



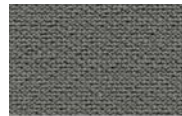
YR01



YR02



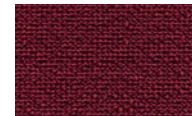
YR03



YR04



YR12



YR14



YR16



YR17



YR18



YR20



YR25

C Norfolk

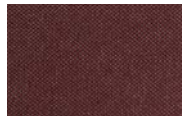
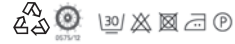


Composition: 100% Polyester with flame retardant treatment Width: 140 cm Weight: 775 g/mtl Light resistance: 6 (ISO 105-B02)

Abrasion: 50.000 Martindale Pilling: 4 (ISO 12945-2) Fastness to rubbing: 4-5 (Dry) 4-5 (Wet) ISO 105-X12 Test ignifugo – Fireproof test

EN 1021/ 1-2 BS 5852, crib 5 NF P 92 / 503 – 507, M1 DIN 4102, B1 UNI 9175, classe 1.IM

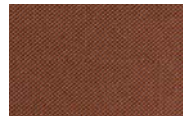
Cal TB 117 NFPA 260, class 1 IMO 2010 FTP part 8



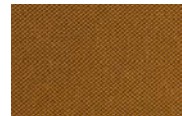
NF01



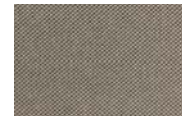
NF02



NF03



NF04



NF05



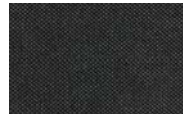
NF06



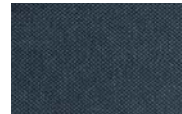
NF07



NF08



NF09



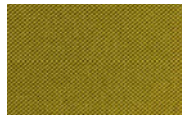
NF11



NF12



NF15



NF16

composizione: 95%
 Poliestere, 5% Cotone
 Larghezza: 140 cm
 Peso: 785 g/mtl (±4%)
 Resistenza alla luce: 4 (ISO
 105-B02)

Abrasion: 55.000
 Martindale
 Pilling: 4 (ISO 12945-2)
 Solidità allo sfregamento:
 4-5 (Asciutto) 4 (Bagnato)
 (ISO 105-X12)

Composition: 95% Polyester,
 5% Cotton
 Width: 140 cm
 Weight: 785 g/mtl (±4%)
 Light resistance: 4 (ISO
 105-B02)

Abrasion: 55.000 Martindale
 Pilling: 4 (ISO 12945-2)
 Fastness to rubbing: 4-5
 (Dry) 4 (Wet) ISO 105-X12



No-shrink



NV100



NV111



NV303



NV306



NV400



NV401



NV404



NV405



NV406



NV500



NV501



NV503



NV603



NV604



NV605



NV606



NV704



NV800



NV802



NV804



NV900



NV901



NV304

A Panarea

abitex

Composition: 100% Polyester
 Width: ± 150 cm
 Weight: ± 320 gr/m²
 Colour fastness to light: 4-5
 (ISO 105-B02)
 Abrasion: > 50.000 rubs (ISO 12947-2)

Fastness to rubbing: dry 5, wet 4 (ISO 105-X12)
 Filling: 5 (ISO 12945-2)
 Sound absorption: w 0,65 folded; w 0,55 not folded (ISO 354-G-100)
 Test ignifugo - Fireproof test

(work in progress):
 11M - UNI 9175; classe 1 - UNI 9177; class 1 - EN 13773; EN 1021 part 1/2;
 BS EN 1021 part 1/2; BS 7176 + A1 medium hazard; BS 5852 crib 5;

BS 5867 part 2 type B; BS 5867 part 2 type C; NF-P 92 503 - Mt;
 NF D60-013 (AM18); DIN 4102 - B1; NFPA 701; NFPA 260 Class 1;
 California TB 117:2013; IMO

MED 3.20 - Ftp 307 part 8; IMO MED 319 - Ftp 307 part 7; ONOMB 3825 - schwer brennbar.



PAN002



PAN003



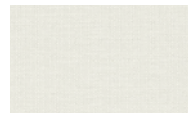
PAN100



PAN101



PAN105



PAN111



PAN201



PAN300



PAN305



PAN400



PAN403



PAN405



PAN600



PAN607



PAN700



PAN701



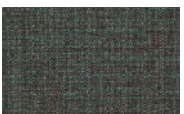
PAN702



PAN703



PAN800



PAN807

D Rolla



Composition: 100% Recycled polyester FR
Width: 148 cm
Weight: 624 g/mtl
Light resistance: 6 (ISO 105-B02)

Abrasion: 70.000 Martindale
Pilling: 4-5 (ISO 12945-2)
Fastness to rubbing: 4-5 (Dry) 4-5 (Wet) ISO 105-X12
Test ignifugo – Fireproof test

EN 1021/ 1-2
BS 5852, crib 5
NF D 60-013 (AM 18)
DIN 4102, B1
UNI 9175, classe 1.IM

Cal TB 117
NFPA 260, class 1
IMO 2010 FTP part 8



RL01



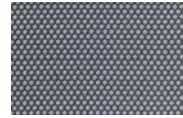
RL02



RL03



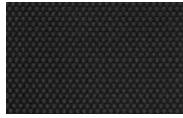
RL04



RL05



RL07



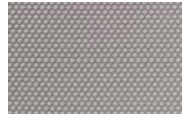
RL10



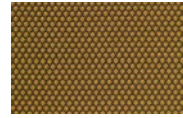
RL11



RL12



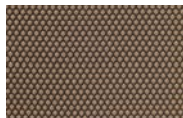
RL13



RL14



RL15



RL16



RL17



RL18



RL19



RL20



SQ0994



SQ0944



SQ0924



SQ0764



SQ0684



SQ0664



SQ0654



SQ0644



SQ0554



SQ0544



SQ0534



SQ0434



SQ0414



SQ0394



SQ0354



SQ0224



SQ0154



SQ0144



SQ0114

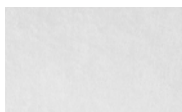
C Velvety

abitex

Composition: 100%
Polypropylene
Width: ± 150 cm
Weight: ± 200 gr/m²
Colour fastness to light: 7-8
(ISO 105-B02)
Abrasion: > 40.000 rubs (ISO

12947-2)
Fastness to rubbing: dry 4/5,
wet 4/5 (ISO 105 X12)
Pilling: 5 (ISO 12945-2)
Sustainability: R.E.A.C.H.,
phthalate free.
Test ignifugo - Fireproof test

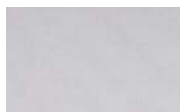
(work in progress):
NFPA 260 Class 1.



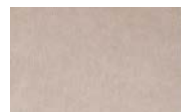
VE100



VE102



VE105



VE106



VE200



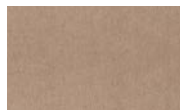
VE301



VE305



VE307



VE402



VE500



VE501



VE601



VE603



VE604



VE700



VE701



VE704



VE705



VE707



VE800



VE801



VE901

Composizione: 100% ImNativ PL
riciclato-biodegradabile Larghezza:
140 cm
Peso: 950 g/m² (±4%)
Resistenza alla luce: 4 (ISO 105-B02)
Abrasione: 100.000 Martindale

Pilling: 4 (ISO 12945-2)
Solidità allo sfregamento: 4-5
(Asciutto) 4-5 (Bagnato) (ISO
105-X12)
Composition: 100% Recycled-
Biodegradable imNativ PL

Width: 140 cm
Weight: 950 g/m² (±4%)
Light resistance: 4 (ISO 105-B02)
Abrasion: 100.000 Martindale
Pilling: 4 (ISO 12945-2)
Fastness to rubbing: 4-5 (Dry) 4-5

(Wet) ISO 105-X12
Test ignifugo – Fireproof test
TB-117:2013 California Test



No-shrink



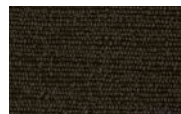
VL100



VL105



VL309



VL404



VL604



VL408



VL409



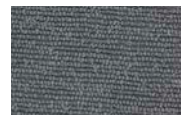
VL410



VL411



VL600



VL601



VL603



VL606



VL804



VL805



VL811



VL900