

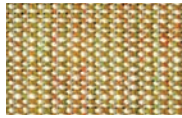
Designer: Giulio Ridolfo  
 Composition: 90% New wool worsted, 10% Nylon  
 Height: 140 cm  
 Selvedge: †  
 Weight: 480 g/mtl

Light resistance: 6-7 (ISO 1-8)  
 Abrasion: 100000 Martindale  
 Colour: there may be slight differences

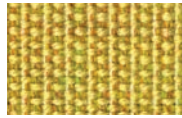
The environment: In compliance with EU environmental regulations  
 Fireproof test AS/NZS 1530.3  
 BS 5852 ig. s. 2-3

DIN 4102 B2  
 EN 1021-1/2  
 IMO A.652(16)  
 NF D 60 013  
 NFPA 260  
 UNI 9175 1IM

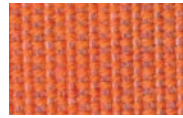
US Cal. Tech. Bull. 117  
 ONORM B1/Q1



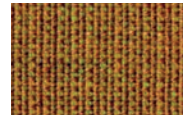
**CV414**



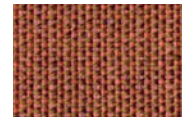
**CV446**



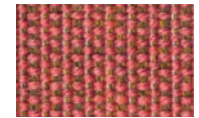
**CV546**



**CV424**



**CV454**



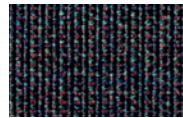
**CV576**



**CV644**



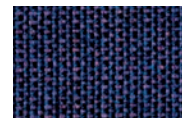
**CV674**



**CV364**



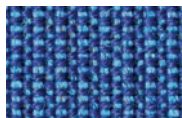
**CV694**



**CV684**



**CV794**



**CV746**



**CV734**



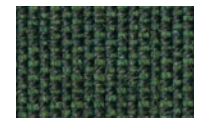
**CV836**



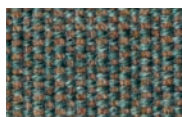
**CV926**



**CV974**



**CV996**



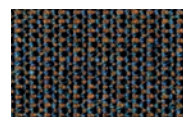
**CV936**



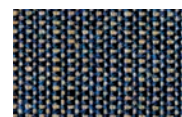
**CV964**



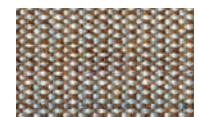
**CV264**



**CV764**



**CV854**



**CV244**



**CV224**



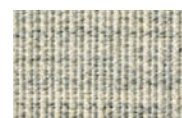
**CV614**



**CV716**



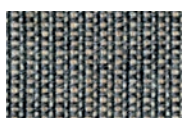
**CV216**



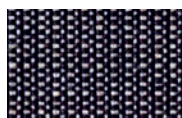
**CV114**



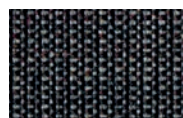
**CV124**



**CV134**



**CV154**



**CV174**

# G Divina 3

# kvadrat

Designer: Finn Sködt  
 Composition: 100% Wool  
 Height: 150 cm  
 Selvedge: ↓  
 Weight: 840 g/ml  
 Light resistance: 5-7 (ISO 105-B02)

Abrasion: 45000 Martindale  
 Colour: there may be slight differences.  
 The light colours may contain dark fibres.  
 The environment: Naturele fibres / renewable resource

Fireproof test  
 AS/NZS 1530.3  
 BS 5852 ig. s. 5  
 BS 5867, part 2, type B  
 DIN 4102 B2, ÖNORM B1/Q1  
 EN 1021-1/2

EN 13501, C-s1, d0, glued  
 IMO A.652(16)  
 NF D 60 013  
 NFPA 260  
 UNI 9175, 11M  
 US Cal. Tech. Bull. 117



**DV106**



**DV171**



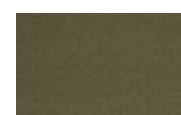
**DV173**



**DV191**



**DV236**



**DV356**



**DV426**



**DV542**



**DV623**



**DV676**



**DV684**



**DV696**



**DV886**



**DV893**



**DV936**

# G Divina Melange 3

# kvadrat

Designer: Finn Sködt  
Composition: 100% Wool  
Height: 150 cm  
Selvedge: ↓  
Weight: 840 g/mtl  
Light resistance: 5-7 (ISO 105-B02)

Abrasion: 45000 Martindale  
Colour: there may be slight differences.  
The environment: Naturele fibres / renewable resource  
Fireproof test AS/NZS 1530.3

BS 5852 ig. s. 5  
BS 5867, part 2, type B  
DIN 4102 B2, ÖNORM B1/Q1  
EN 1021-1/2  
EN 13501, C-s1, d0, glued  
IMO A.652(16)  
NF D 60 013

NFPA 260  
UNI 9175, 11M  
US Cal. Tech. Bull. 117



**DM120**



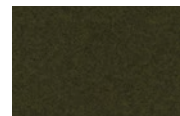
**DM180**



**DM260**



**DM427**



**DM471**



**DM547**



**DM571**



**DM647**



**DM731**



**DM871**

## B Eco Leather



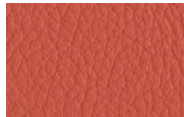
Composition: 76%PVC - 2%PU - 22%PES  
 Width: 140 cm  
 Weight: g/m<sup>2</sup> 540 +/-10  
 Cycles (ISO 5470-2): 60000  
 Colour fastness to dry rubbing (ISO 105-X12): 4/5  
 Colour fastness to wet rubbing (ISO 105-X12): 4/5  
 Colour fastness to light (Xenotest - blu scale) (ISO 105-B02): 6

Adhesion (ISO 2411): > 40  
 Tensile strenght (UNI EN ISO 1421): 600 long.  
 Tensile strenght (UNI EN ISO 1421): 310 trasv.  
 Elongation at break % (UNI EN ISO 1421): 57 long.  
 Elongation at break % (UNI EN ISO 1421): 120 trasv.  
 Tear strenght (UNI EN ISO 4674): 50 long.  
 Tear strenght (UNI EN ISO 4674): 50 trasv.

Cycles (UNI 4818-13): 100000  
 Fireproof test: EN 1021-2:2006 / UNI 9175 classe 1 IM /  
 BS5852-1:1979 part 1 - TB 117:2013



**SE1007**



**SE1008**



**SE1009**



**SE1019**



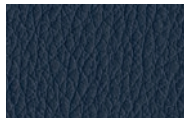
**SE1033**



**SE1035**



**SE1030**



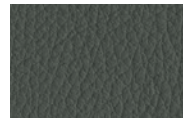
**SE1014**



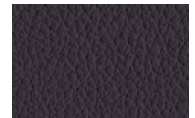
**SE1021**



**SE1031**



**SE1012**



**SE1023**



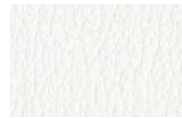
**SE1006**



**SE1018**



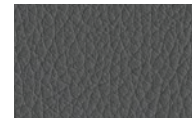
**SE1002**



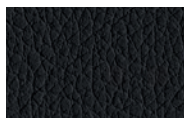
**SE1001**



**SE1015**



**SE1024**



**SE1017**

# E Field 2

# kvadrat

Designer: Alfredo Häberli  
Composition: 100% Trevira  
CS  
Height: 140 cm  
Selvedge:  
Weight: 430 g/m<sup>2</sup>

Light resistance: 6-7  
(ISO 1-8)  
Abrasion: 100.000  
Martindale  
Colour: there may be slight  
differences

The environment:  
reduced environmental  
impact  
Fireproof test  
BS 5852 Crib 5  
BS 5852 part 1, lg. s. 0  
DIN 4102 B1

EN 1021-1/2  
FAR 25.853  
IMO FTP Code 2010 Part 8  
NF D 60 013  
NF P 92 507 M1  
ÖNORM B1/ Q1

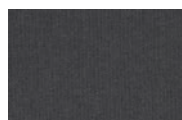
SN 198 898 5.2  
UNI 9175 1IM  
UNI 9177 Classe 1  
US Cal. Bull. 117-2013



**FD132**



**FD142**



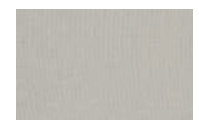
**FD182**



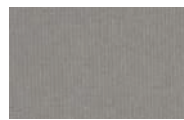
**FD192**



**FD222**



**FD233**



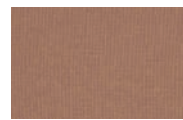
**FD242**



**FD343**



**FD373**



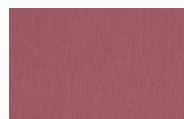
**FD443**



**FD463**



**FD623**



**FD643**



**FD662**



**FD663**



**FD723**



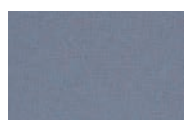
**FD733**



**FD773**



**FD782**



**FD843**



**FD943**



**FD963**

## G Fiord

## kvadrat

Designer: Louise Sigvardt & Tone Barnung  
Composition: 92% Wool, 8% nylon  
Width: 140 cm  
Selvedge: †  
Weight: 500 g/mtl

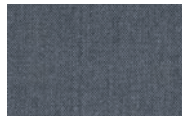
Light resistance: 5-7 (ISO 105-B02)  
Abrasion: 60000 Martindale  
Colour: there may be slight differences.  
The environment: Naturele fibres / renewable resource

Fireproof test  
BS 5852 Crib 5 with treatment  
BS 5852 part 1  
DIN 4102 B2  
EN 1021-1/2  
IMO FTP Code 2010 Part 8

NF D 60 013  
UNI 9175 1IM  
US Cal. Bull. 117-2013  
AS/NZS 3837, class 2



FO101



FO171



FO191



FO271



FO451



FO521



FO581



FO751



FO771



FO971



FO991

**H**

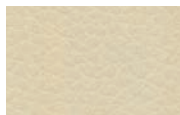
## Full-grain leather



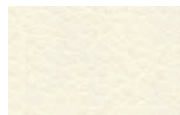
**PR**  
Red



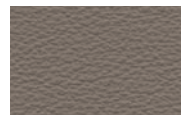
**PC**  
Cuoio



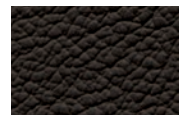
**PB**  
Beige



**PW**  
White



**PT**  
Dove grey



**PTM**  
Dark brown



**PN**  
Nero



Designer: Raf Simons & Fanny Aronsen  
 Composizione: 100% Cotone  
 Larghezza: 140 cm  
 Cimosa: <sup>1</sup>  
 Peso: 520 g/mtl

EN 13501, C-s1, d0, glued  
 IMO A.652(16)  
 NF D 60 013  
 NFPA 260  
 UNI 9175, 1IM  
 US Cal. Tech. Bull. 117

Resistenza alla luce: 5-6 (ISO 105-B02)  
 Abrasione: 100000 Martindale  
 Colore: possono riscontrarsi lievi differenze

L'ambiente: Fibre naturali / risorsa rinnovabile  
 Fireproof test AS/NZS 1530.3  
 BS 5852 lg. s. 5  
 BS 5867, part 2, type B

DIN 4102 B2, ÖNORM B1/Q1  
 EN 1021-1/2



**HA432**



**HA512**



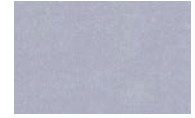
**HA343**



**HA182**



**HA952**



**HA133**



**HA212**



**HA283**



**HA982**



**HA582**



# E Oceanic

Composition: 100%  
post-consumer recycled  
polyester, including 50%  
SEAQUAL yarn  
Weight per square meter:

497 g/m2 ±5% Heavy  
duty / 10 year guarantee.  
Independently  
certified to ≥100,000  
Martindale cycles

Fastness to Rubbing: Wet: 4,  
Dry: 4 (ISO 105 - X12)  
Flammability: EN 1021 - 1&2  
Cigarette & Match  
BS 7176 Low Hazard



**OC01**



**OC02**



**OC03**



**OC04**



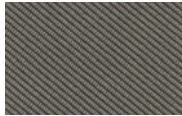
**OC05**



**OC06**



**OC07**



**OC08**



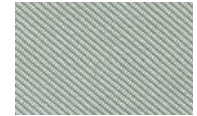
**OC10**



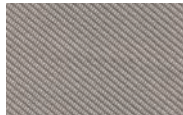
**OC11**



**OC12**



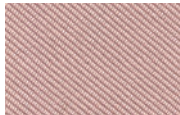
**OC13**



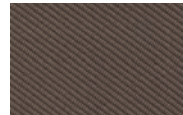
**OC14**



**OC15**



**OC16**



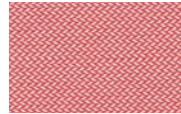
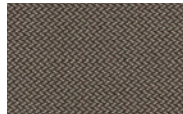
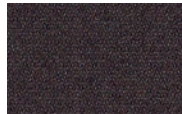
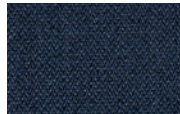
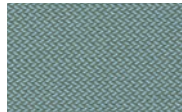
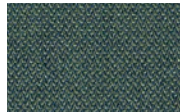
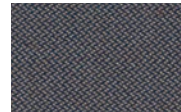
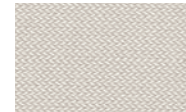
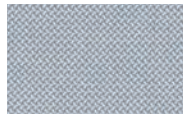
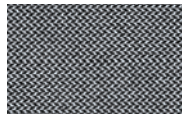
**OC09**

Designer: Georgina Wright  
 Composition: 100% Recycl.  
 polyester FR  
 Height: 140 cm  
 Selvedge:  
 Weight: 420 g/lin.m

Light resistance: 5-7  
 (ISO 1-8)  
 Abrasion: 80.000 Martindale  
 Colour: there may be slight  
 differences  
 The enviroment: reduced

environmental impact  
 Fireproof test  
 BS 5852 part 1, ig. s. 0  
 DIN 4102 B1  
 EN 1021-1/2  
 IMO FTP Code 2010 Part 8

NF D 60 013 with treatment  
 UNI 9175 11M  
 US Cal. Bull. 117-2013  
 ÖNORM B1/ Q1

**RV424****RV634****RV664****RV524****RV414****RV454****RV274****RV384****RV184****RV774****RV764****RV754****RV834****RV944****RV974****RV284****RV324****RV224****RV144****RV164****RV194**

# c Step

# Gabriel®

Composition: 100% Trevira  
Total width: 140 cm  
Width: 140 cm  
Abrasion: rubs martindale  
(EN ISO 12947-2)  
100,000 double rubs

wyzenbeek (ASTM D4157-07) (heavy duty upholstery)  
100,000  
Pilling: scale 1-5, max. 5 - EN ISO 12945-2  
Light fastness: scale 1-8,

max. 8 - EN ISO 105 B02  
Rubbing fastness: scale 1-5, max. 5 - EN ISO 105x12 (wet/dry) 4-5/4-5  
Maintenance:wash or dry cleaning P(W).

Step is made of Trevira CS which is a polyester material suited for environments with special requirements for cleaning.



**ST60011**



**ST60021**



**ST60091**



**ST60999**



**ST61149**



**ST62057**



**ST63075**



**ST64013**



**ST64159**



**ST64178**



**ST65011**



**ST65047**



**ST66148**



**ST67004**



**ST68118**



**ST68121**



**ST68159**



**ST68161**





**SM60004**



**SM60021**



**SM60092**



**SM61103**



**SM61149**



**SM61150**



**SM61151**



**SM61152**



**SM62057**



**SM64159**



**SM64178**



**SM64179**



**SM64181**



**SM65011**



**SM65047**



**SM66018**



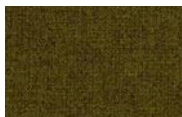
**SM67004**



**SM68119**



**SM68158**



**SM68165**

# A Space

Composizione: 100% PPR  
Altezza: 140 cm  
Peso al metro quadro: 240 g/m<sup>2</sup> (± 4%) (UNI 5114)  
Resistenza alla luce: 4-5 (ISO 105 B02)

Abrasion: 25.000 Martindale  
Pilling: 4-5 (ISO 12945-2)  
Solidità allo sfregamento: 4-5 (Asciutto) 4 (Bagnato) ISO 105-X12  
Composition: 100% PPR  
Height: 140 cm

Weight per square meter: 240 g/m<sup>2</sup> (± 4%) (UNI 5114)  
Light resistance: 4-5 (ISO 105 B02)  
Abrasion: 25.000 Martindale  
Pilling: 4-5 (ISO 12945-2)  
Fastness to rubbing: 4-5 (Dry) 4

(Wet) ISO 105-X12



No-shrink



**SP900**



**SP801**



**SP800**



**SP708**



**SP705**



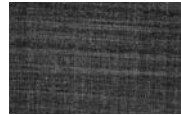
**SP704**



**SP702**



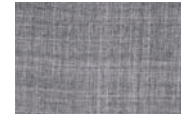
**SP700**



**SP605**



**SP604**



**SP602**



**SP600**



**SP504**



**SP406**



**SP403**



**SP402**



**SP400**



**SP304**



**SP303**



**SP302**



**SP111**



**SP100**



## E Yoredale

**camira**

Composition: 95% Wool, 3% Polyester, 2% Polyamide  
Total width: 138 cm minimum  
Weight per linear meter: 700 g/m2 ±5%  
("Martindale") Abrasion

resistance. Heavy duty / 10 year guarantee. Independently certified to ≥50,000 Martindale cycles

Flammability  
EN 1021 - 1&2 Cigarette & Match  
BS 7176 Low Hazard  
ONORM B 3825 & A 3800-1 (58kg/m3 CMHR Foam)

UNI 9175 Classe 1 IM  
BS 5852 Ignition Source 5 when FR treated BS 7176 Medium Hazard when FR treated



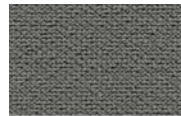
YR01



YR02



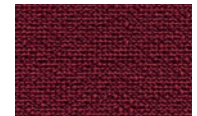
YR03



YR04



YR12



YR14



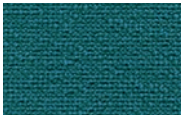
YR16



YR17



YR18



YR20



YR25

# C Norfolk

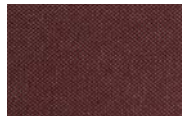
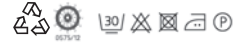


Composition: 100% Polyester with flame retardant treatment Width: 140 cm Weight: 775 g/mtl Light resistance: 6 (ISO 105-B02)

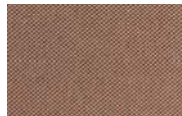
Abrasion: 50.000 Martindale Pilling: 4 (ISO 12945-2) Fastness to rubbing: 4-5 (Dry) 4-5 (Wet) ISO 105-X12 Test ignifugo – Fireproof test

EN 1021/ 1-2 BS 5852, crib 5 NF P 92 / 503 – 507, M1 DIN 4102, B1 UNI 9175, classe 1.IM

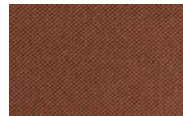
Cal TB 117 NFPA 260, class 1 IMO 2010 FTP part 8



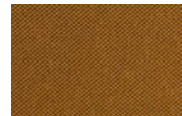
**NF01**



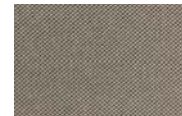
**NF02**



**NF03**



**NF04**



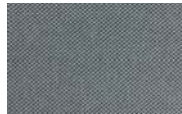
**NF05**



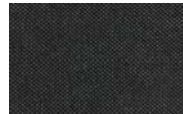
**NF06**



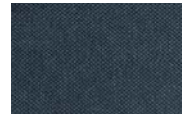
**NF07**



**NF08**



**NF09**



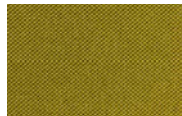
**NF11**



**NF12**



**NF15**



**NF16**



composizione: 95%  
 Poliestere, 5% Cotone  
 Larghezza: 140 cm  
 Peso: 785 g/mtl (±4%)  
 Resistenza alla luce: 4 (ISO  
 105-B02)

Abrasion: 55.000  
 Martindale  
 Pilling: 4 (ISO 12945-2)  
 Solidità allo sfregamento:  
 4-5 (Asciutto) 4 (Bagnato)  
 (ISO 105-X12)

Composition: 95% Polyester,  
 5% Cotton  
 Width: 140 cm  
 Weight: 785 g/mtl (±4%)  
 Light resistance: 4 (ISO  
 105-B02)

Abrasion: 55.000 Martindale  
 Pilling: 4 (ISO 12945-2)  
 Fastness to rubbing: 4-5  
 (Dry) 4 (Wet) ISO 105-X12



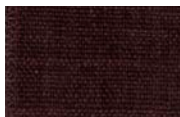
No-shrink



**NV100**



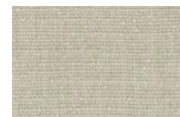
**NV111**



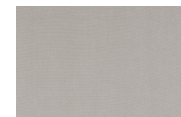
**NV303**



**NV306**



**NV400**



**NV401**



**NV404**



**NV405**



**NV406**



**NV500**



**NV501**



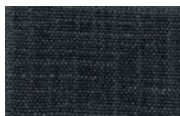
**NV503**



**NV603**



**NV604**



**NV605**



**NV606**



**NV704**



**NV800**



**NV802**



**NV804**



**NV900**



**NV901**



**NV304**



**SQ0994**



**SQ0944**



**SQ0924**



**SQ0764**



**SQ0684**



**SQ0664**



**SQ0654**



**SQ0644**



**SQ0554**



**SQ0544**



**SQ0534**



**SQ0434**



**SQ0414**



**SQ0394**



**SQ0354**



**SQ0224**



**SQ0154**



**SQ0144**



**SQ0114**